



Leaning Into Engagement of Fathers



Search, Engage,
Explore, Kinnect



Welcome



Let's do introductions!



Important Information

Who to call?

Closest exit?

First Aid kit



Takeaways?



Learning Objectives

- Recognize how child welfare practice is currently limited in its approach to engaging with the broader paternal family network
- Acknowledge the equal importance of equitable level of effort to search for and engage with fathers and the paternal side of the family
- Recall strategies for identification of additional engagement opportunities for alleged, established, and social fathers and their families
- Identify opportunities for including fathers at various points throughout the service episode outside of the main decision points

Why Engage Fathers?



Values



Reasons



Outcomes

Core Values

- All children have family and we can find them if we try.
- All family have value, regardless of their ability to serve as physical caregiver of a child.
- All children deserve to remain connected to their culture, their community, and their family.

Let's Start With Some Questions:

- How often are you engaging with fathers in current practice?
- What about the rest of their extended family?

Father

(fah-*th* er) noun

A man in relation to his child or children





Menti Poll

Get out your favorite mobile device!



WHY?



Outcomes With an Involved, Loving Father

More likely to:

- Do well in school
- Have healthy self-esteem
- Exhibit empathy and pro-social behavior

Less likely to:

- Engage in drug use
- Have truancy issues
- Be involved in delinquent activity

Children Who Grow Up Without a Father

More likely to:

- Have behavior problems
- Drop out of school
- Face depression, anxiety, or other mental health issues
- Struggle financially
- Face teenage pregnancy



Child/Youth Statistics Can Be Telling

Fatherless Homes	Youth Experiences	Homes with Fathers
63%	Suicides	37%
90%	Homeless and runaway	10%
85%	Exhibit behavioral disorders	15%
71%	High school dropouts	29%
75%	In chemical abuse centers	25%
70%	In state-operated institutions	30%

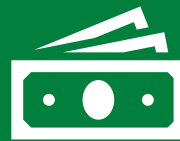
Children with
involved fathers
do better



Different Angles



Custody



Support



Language

Let's Play a Game!




Who can guess the percentage of homes in the United States where the father is the custodial parent?

>20%

Current Statistics

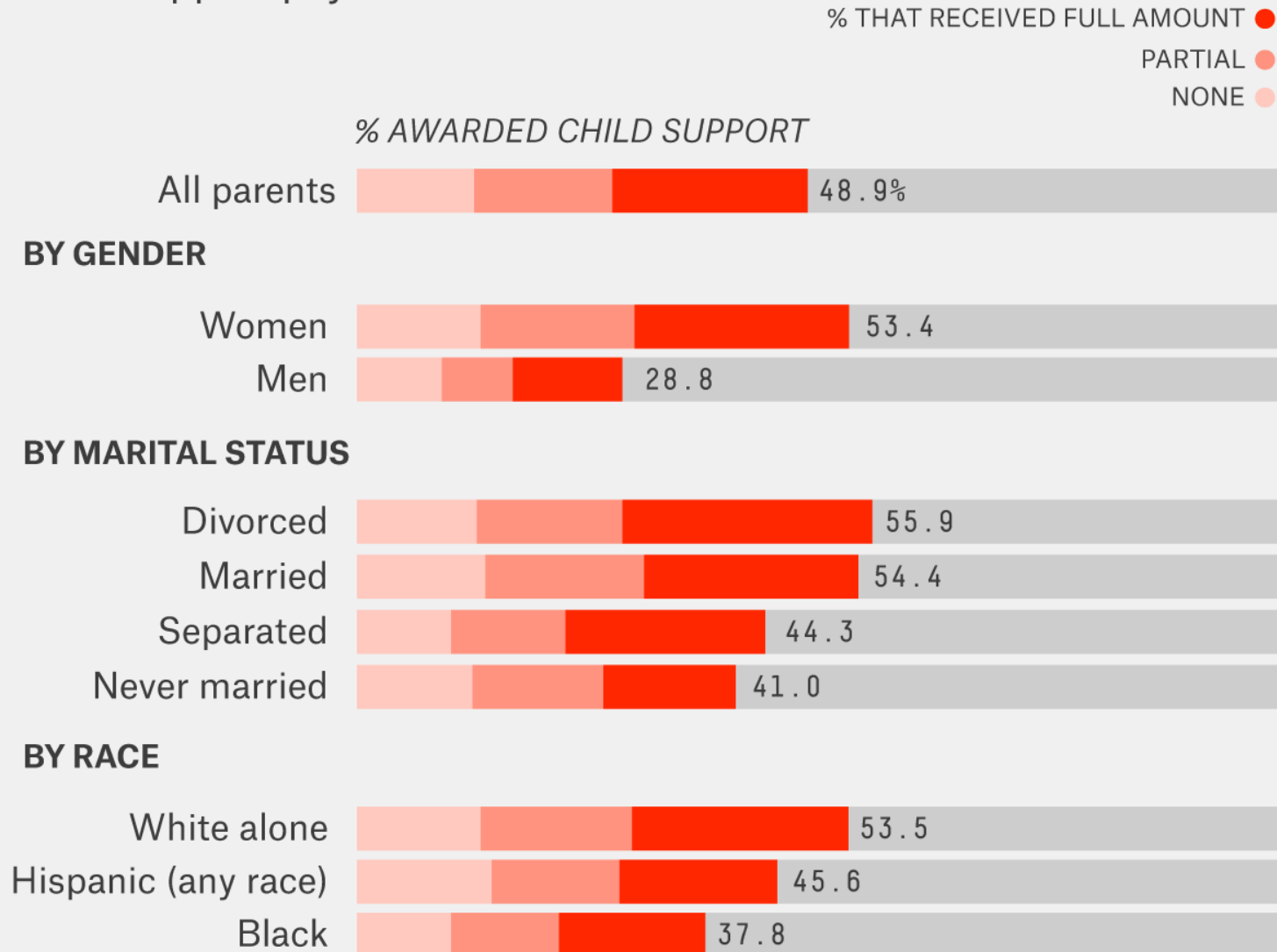


25%

- 
- In the 1960s, only about 300,000 single fathers were granted custody from court.
 - Today, there are over 2.5 million single fathers with custody in the United States.
 - Reports show the number of custodial fathers in Tennessee is increasing more quickly than that of single mothers.

Which Parents Are Awarded Child Support?

Percentage of all custodial parents who were awarded and received child support payments in 2011



What about Ohio?



OHIO

27.51%



The Language We Use...

- *Influences the way we think* (Steven Pinker)
- *Creates the reality we experience* (Michael Hyatt)



What's in a Word?

- Absent Father
- “Deadbeat” Dad
- Absent Parent (Father or Mother)
- Non-Custodial Parent

“The parent who does not have primary or physical custody of the child(ren).”

What word
would you use?



Failure by the child welfare caseworker and the courts **to locate and contact fathers**, even when their identity is known, **prevents many fathers from engaging in their child's case** or, in some situations, from even knowing the child has been abused or neglected.

The Urban Institute reports that only **55%** of noncustodial fathers were contacted, compared to **100%** of noncustodial mothers.



14



Reflection



Let's Take a Break!



Roles and Barriers



Types



Establishment



Barriers



Legal



Social



Alleged



Legal Father / Paternity Established



Social Father



What Does “Alleged Father” Mean?

- Paternity has not been established
- Mother names man as possible father
- Mother could name several names

We explore each alleged father and their families equally.

Alleged Father(s)



How is Paternity Established in Ohio?

Presumption of Paternity

- Parents are married, and child was born during the marriage or within 300 days of marriage dissolving
- Parents attempted to marry, but marriage is or could be declared invalid
- Father signed Acknowledgement of Paternity (AOP), but 60 days has not yet passed
 - Rescission can occur within these 60 days
 - Presumed father can request DNA test

How is Paternity Established in Ohio?

Final and Enforceable Determination of Paternity

- Signed Acknowledgement of Paternity (by both parents; must be notarized)
- After 60 days have passed and no rescission
- By Judgement Entry or Court Order (Default Judgement); includes divorce or dissolution
- By Administrative Order (done by Child Support after DNA test)

Barriers to Involving Fathers





The way we engage with fathers and connect them with services can directly impact the way fathers contribute to their child's development.

- Casey Family Programs

Potential Barriers to a Father's Involvement

- Child welfare professional and systemic bias (e.g., case names reflect mother)
- Overburdened workers who may be hesitant to take the time to locate and involve non-custodial fathers
- Mothers' gate-keeping

Potential Barriers to a Father's Involvement

- Characteristics of non-custodial fathers that make them less accessible (i.e., incarceration, homelessness, impairment by substance abuse, military enlistment, etc.)
- Lack of father-specific services and supports
- Child welfare professionals' reluctance to involve male perpetrators in planning and service delivery
- Dynamics around domestic violence

Search and Engagement



Who?



Where/How?



What?

WHO?



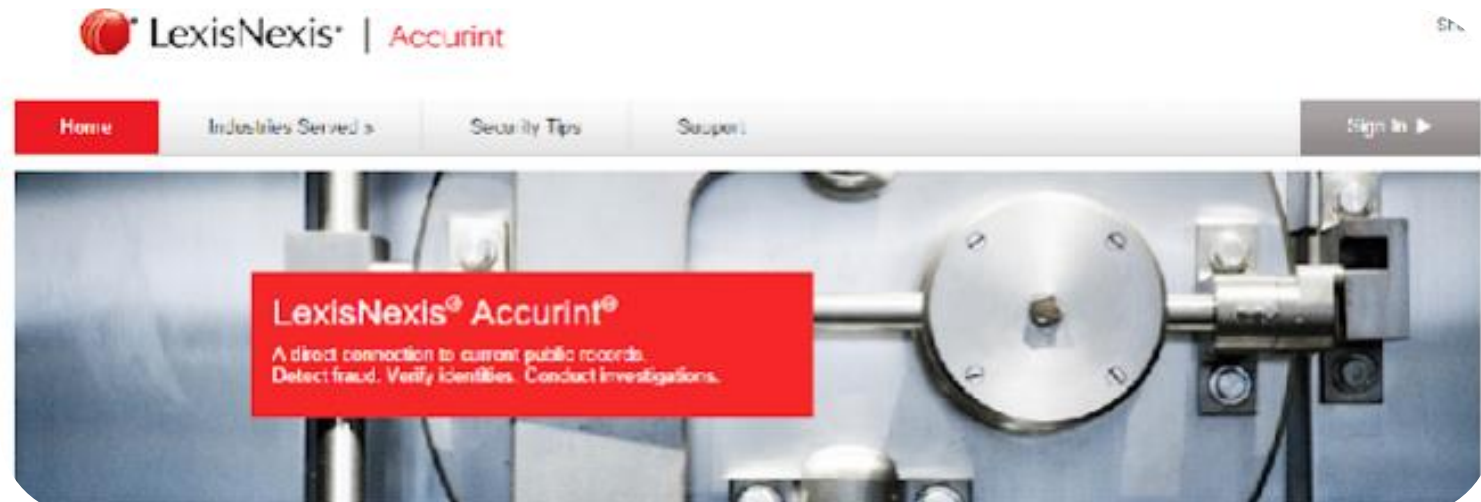
How Do We Find the Father?

- Custodial Parent
- Social Services Database
- *Where to next?*




LexisNexis®: Accurint

- Purchased license
- Confidential
- Powerful investigative tool
 - Efficiently locate people
 - Accurately verify identify
 - Perform in-depth searches



Connect Our Kids – People Search

 **CONNECT OUR KIDS**

Log In or Sign Up

Search By: **Name** Email Address Phone URL

Search

Add Relationship

People Search

Social workers, family recruiters, and CASA volunteers use this tool to find contact information for extended families and supporters of foster kids. This search uses public information from over 300 sources and covers over 3 billion people.

Publicly Available Information

- Public search databases
- Various search engines
- Obituary searches
- Social media searches



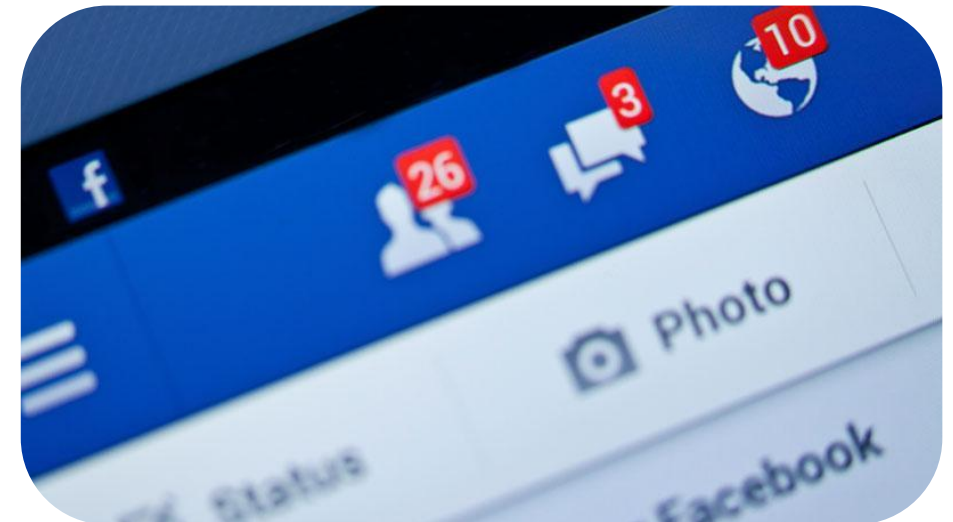
Tips For Searching

Info or About Sections

- Employment, school, location
- Contact information
- Pages or companies they “like” for location clues
- Relatives list

Friends List

- Explore relatives with the same last name
- Search for specific relatives by nicknames



All Searching Leads To...

- Attempting
- Contacting
- Engaging



WHAT?

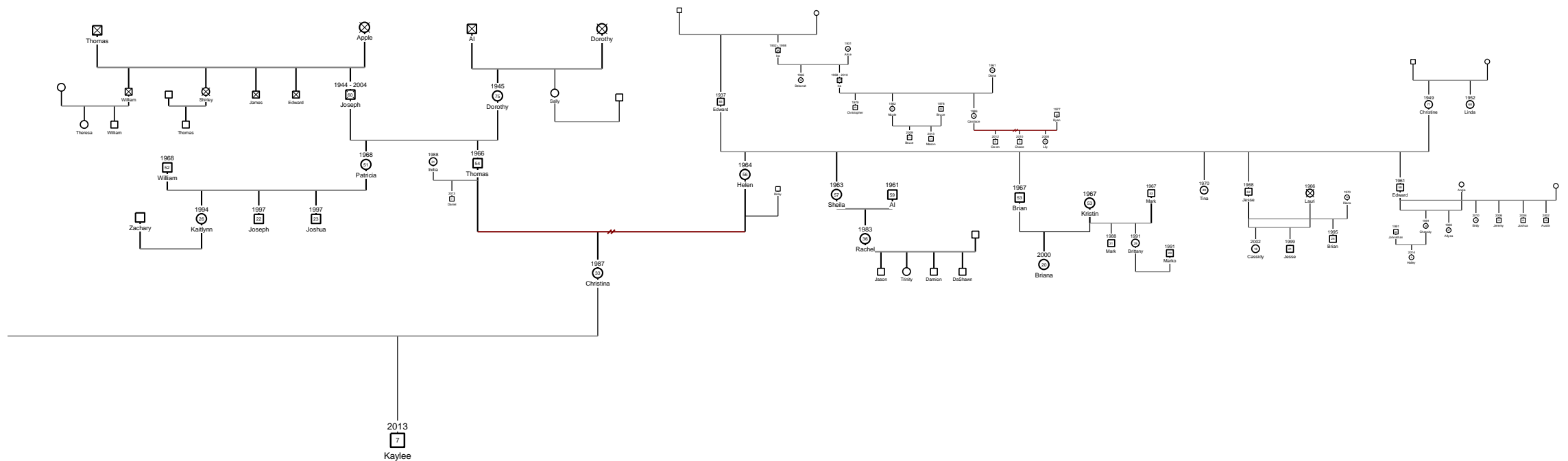




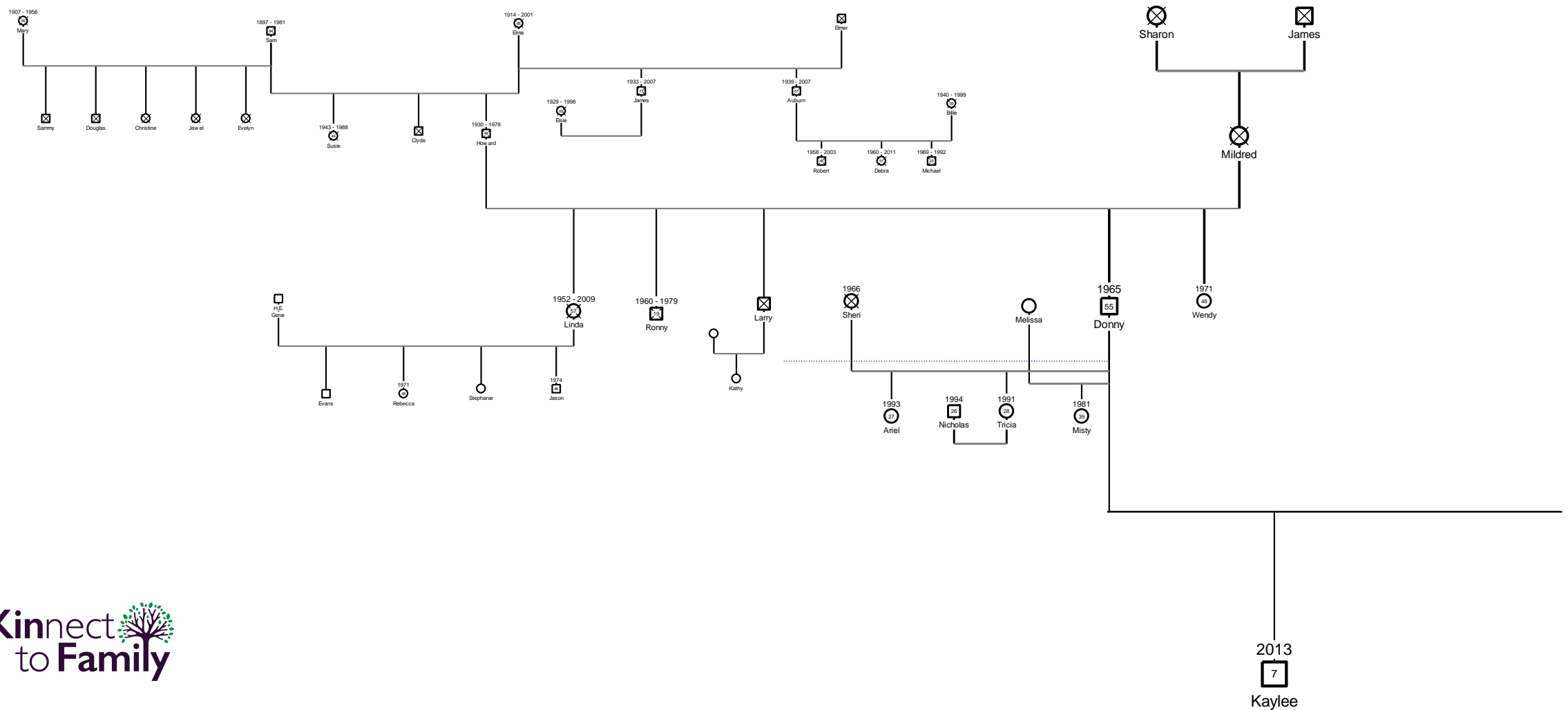
Menti Poll



Maternal Family On Genogram



What We Would Miss From Dad's Side



When the Going Gets Tough, Lean In!

- Deceased Fathers
- International Fathers



Then Lean In Even Further

Incarcerated Fathers



Reflection



Wrap Up



Commitment



Questions



Survey

Commitment



Questions? Now or Later?



Rick Dencer
Statewide FSE Trainer with Kinect
Rick.Dencer@kinnectohio.org
(216) 402-1091

Interested in bringing Kinect Programs
to Your County? Reach out to us!

Alyse Almadani
Program Manager

Alyse.Almadani@kinnectohio.org

Stephanie Beleal
Program Director

Stephanie.Beleal@kinnectohio.org

Thank you!

Kinnect
to Family

