

The Impact of Enhanced Kinship Navigation on Caregivers and their Children



Washington State Department of
CHILDREN, YOUTH & FAMILIES



agenda



Introductions
3

History
5

Essential components
11

Overview of outcomes
12

What can you take home
24

meet our presenters



GEENE DELAPLANE

PhDc, Kinship Care and Guardianship
Program Manager



ROSALYN ALBER

Kinship Program
Manager



ANGELIQUE DAY

PhD, MSW
Associate professor University of
Washington

What is kinship care?

- ❖ Full-time care by relative or family-like connection
- ❖ Caregivers are most commonly grandparents
- ❖ Caregivers tend to be women and lower-income
- ❖ Kinship care has benefits for children
- ❖ Most kinship caregivers aren't involved in the child welfare system



Kinship Stats

	2018	2019	2020
Total population <18*			
National	73,385,501	73,088,675	72,822,113
Washington	1,657,823	1,661,024	1,665,794
Living with neither parent*			
National	3,792,000	4,020,000	3,736,00
Washington	75,000	77,000	78,000
Living with grandparent*			
National	2,787,000	2,791,000	2,531,000
Washington	44,000	41,000	42,000
Children in Wa in out-of-home care **	9,185	9,160	8165
Kinship	3,980	3,954	4,403
Non-Kinship	5,205	5,206	3,762

*Data from the Annie E. Casey KIDS COUNT data center available at <https://datacenter.kidscount.org/>

**Data from Adoption and Foster Care Analysis and Reporting Systems; INFOFAMLINK Relative Versus Non-Relative Placements, January 29, 2020. Data reflects the number of children in out-of-home care as of January 29 of the indicated calendar year.

History

- ❖ 2004- 2 pilot sites (Yakima & King Co) were funded through Casey Family Programs.
- ❖ 2005-the 2 pilot sites were funded by state legislature (\$100,000 per year).
- ❖ 2007-Leg increases Kin Nav funding (\$400,000) for 4 additional Navigators and adds funding 2 positions to full time.
- ❖ 2008-Leg increases Kin Nav Program (\$132,000) for 1.5 additional Navigators.
- ❖ 2016-WA State Legislature funded a Tribal Kinship Navigator initiative.
- ❖ 2023-Statewide advocates are seeking increased funding Kinship Navigator.



Kinship Navigator Programs

Services as Usual

- ❖ Kinship Navigator programs help caregivers navigate service networks and access resources
- ❖ WA services as usual:
 - Navigators in 30 of 39 counties
 - Hotline model with no follow up
- ❖ Comparison sites for research: 12 counties that continued providing Kinship Navigator services as usual

Enhanced Model

- ❖ In 2018, three state agencies partnered to implement an enhanced model in 7 counties in Washington state
- ❖ Pilot Sites: navigators complete a needs assessment and establish goals with the caregivers
- ❖ Navigators and caregivers work together for up to 6 months to address needs and track progress towards goals set at intake



Research Design

- ❖ Intake
 - Demographics
 - Needs assessment
 - Goal setting
- ❖ Three-month follow-up
 - If caregiver still needs support, case stays open
- ❖ Six-month follow-up
 - Case closed at this time, but can be reopened
- ❖ Six-month post-close follow-up
 - Closed case form and satisfaction survey
- ❖ Twelve-month post-close follow-up
 - Closed case form and satisfaction survey



Intervention and Control/Comparison Site Selection Process

❖ Selection was made by collecting information about services provided at each location including:



- Kinship support groups,
- Kinship Navigator,
- Kinship Newsletter,
- Legal Clinics,
- Kinship Closets,
- Kinship Collaborations,
- Parenting Classes,
- Spanish Speaking Navigators,
- Kinship Website, etc.

❖ Intervention sites provide 5 or more services from the list; control sites provide fewer than 5 services from the list.

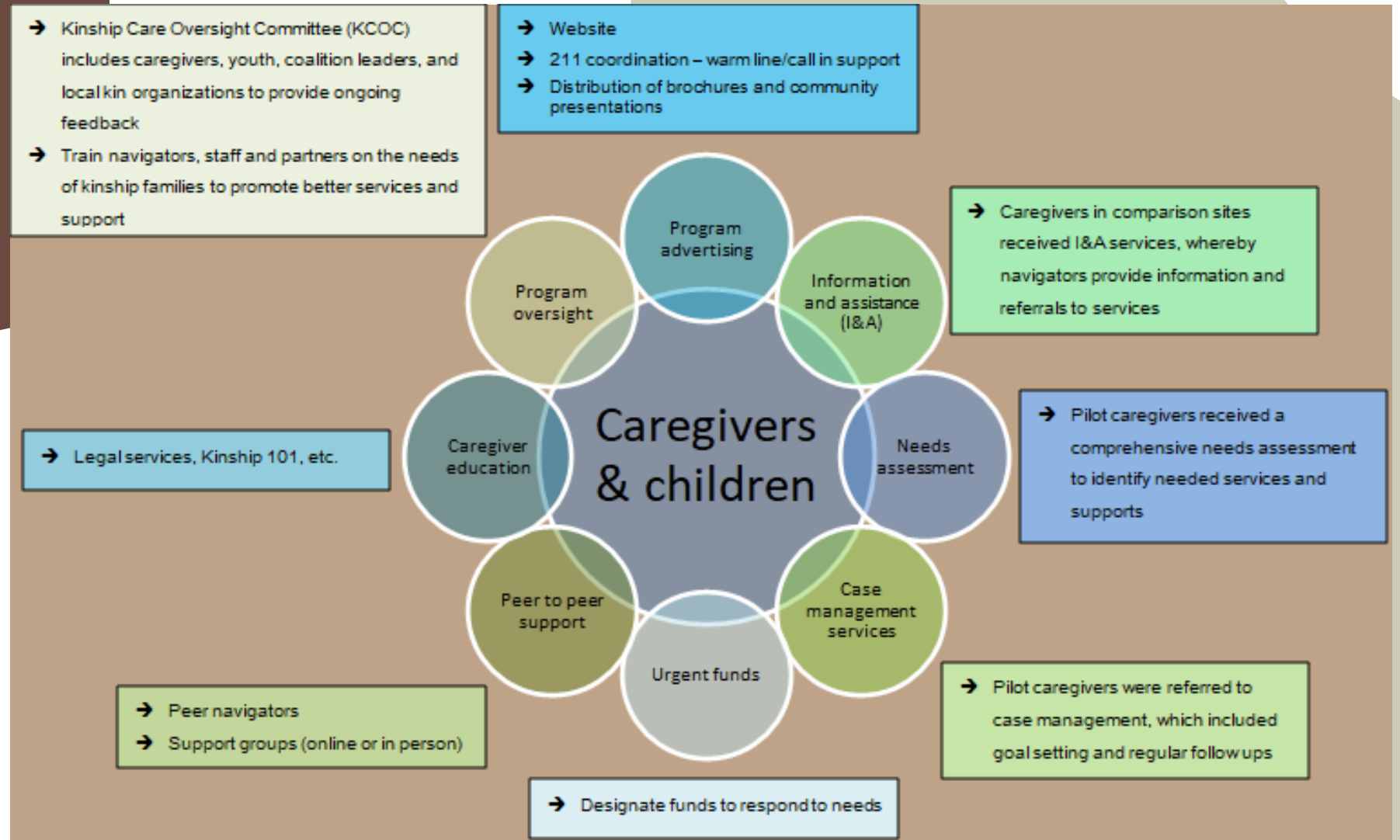
❖ Also used Census Data as part of strategy to ensure baseline equivalence

Data sources

- ❖ Two surveys - child outcomes and caregiver outcomes six months after case closure
- ❖ Administrative data:
 - Enrollment in benefits
 - Child-Only TANF
 - SNAP
 - Family referral to DCYF
 - Abuse allegations and substantiations
 - Caregiver race
 - Caregiver gender
 - Kinship Caregiver Support Program (KCSP)

Survey content area	Example question	Answer options
Children who left the home	Where did the child move to?	Returned to birth parent / Entered foster care / Moved to another kin caregiver / Aged out / Other
Caregiver physical health	In general, how would you rate your physical health?	1 = Excellent to 5 = Poor
Behavioral health of children still in the home	Are your kinship child's behavioral health needs being met?	Yes / No / Not applicable / I don't know
Education of children still in the home	Has your kinship child been suspended or expelled?	Yes, suspended / Yes, expelled / No / I don't know

Essential Components



The background features a light gray base with large, flowing organic shapes in muted olive green and a dusty rose color. In the top left corner, there is a faint, stylized illustration of a pine branch with needle-like leaves.

Overview of Outcomes

Caregiver demographics

Intervention site caregivers (n=126)

Comparison site caregivers (n=126)

Census data for WA grandparents responsible for grandchildren

64% White

22%
Hispanic

71% White

10%
Hispanic

72% White

12% Hispanic

7% AIAN

6% Black

6% AIAN

10% Black

6% AIAN

4% Black

83% not
DCYF
involved

39% SNAP
recipients

84% not
DCYF
involved

40% SNAP
recipients

We used Propensity Score Matching (PSM) to control for caregiver race, age, and income

**Demographic data from satisfaction survey results*

58 years old

58 years old

Enrollments and fidelity compliance

ENROLLMENTS

- 261 enrolled
- 48 withdrew (18%)
- 213 total valid enrollments

FIDELITY

- 172 cases met fidelity (81%)
- Fidelity compliance improved after one year (94%)

GOALS AT CASE CLOSURE

- Average number of goals: 3
- 91% of caregivers completed at least one goal
- 60% of all goals were completed

Other Contributions to Increased Fidelity

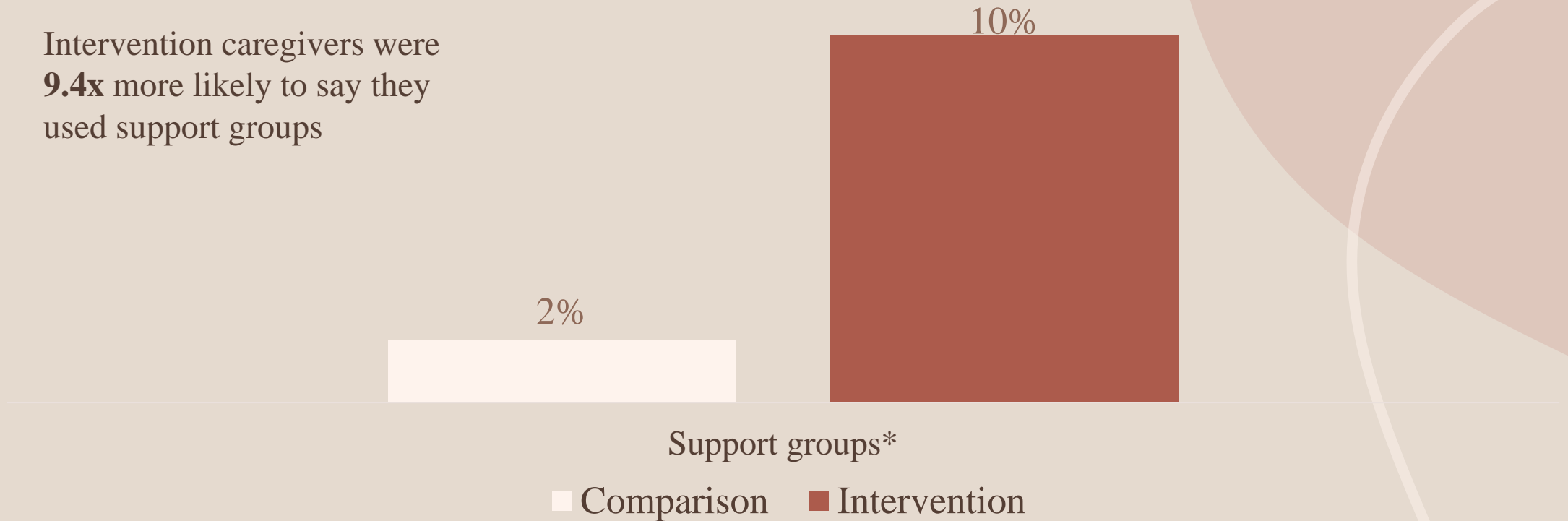
- ❖ Interns were used to help facilitate follow up calls.
- ❖ Spanish speaking Navigators- we contracted with bilingual case manager to do post case management calls with Spanish speaking caregivers.
- ❖ COVIDs impact- increased the ability for caregivers to utilize electronic methods of communication. We also found that during the lockdown, people were hungry to have conversations and were very responsive to phone calls.
- ❖ One key to targeting populations was to have census data for each region in the project. This allowed project partners and the Navigators to target outreach to align with the demographics of each community.
- ❖ Navigators have long term relationships with caregivers in their communities and assisted greatly with outreach and follow-ups.



Significant Differences

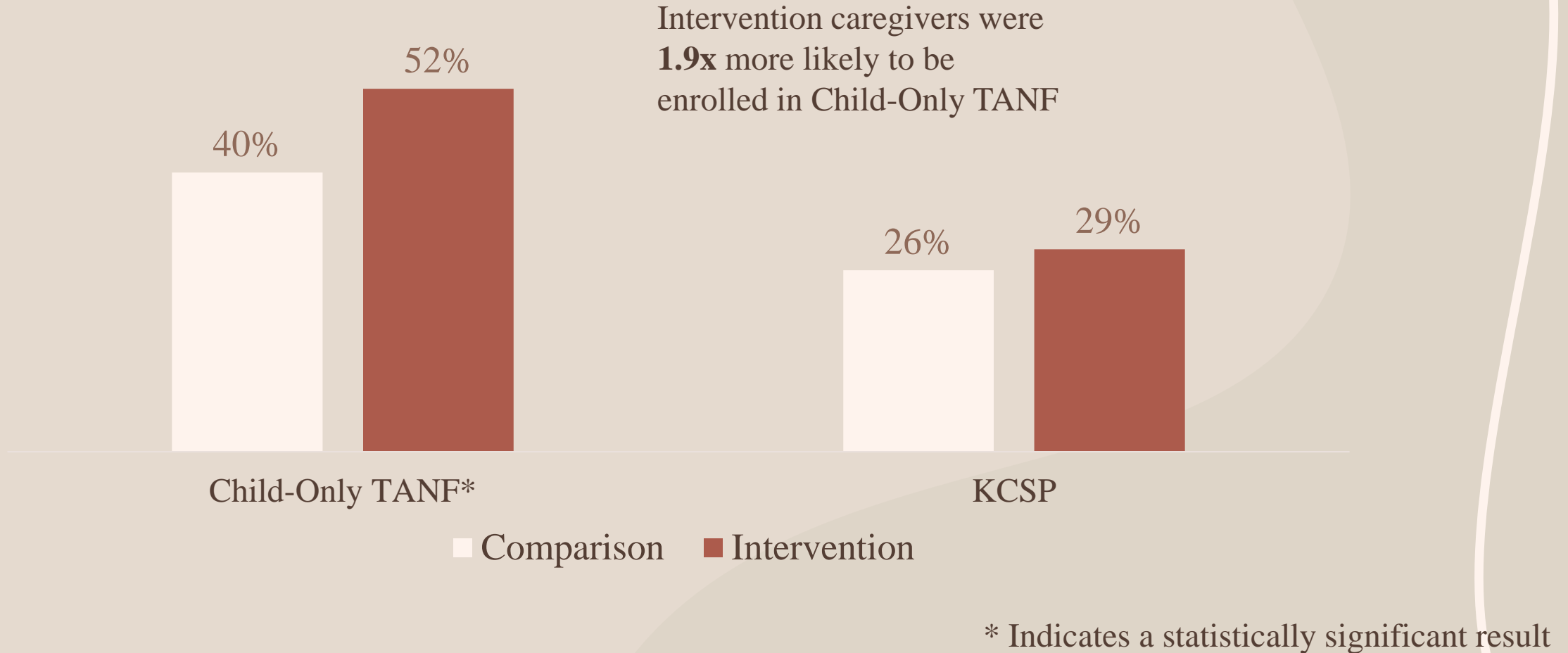
Caregiver access to services

Intervention caregivers were
9.4x more likely to say they
used support groups

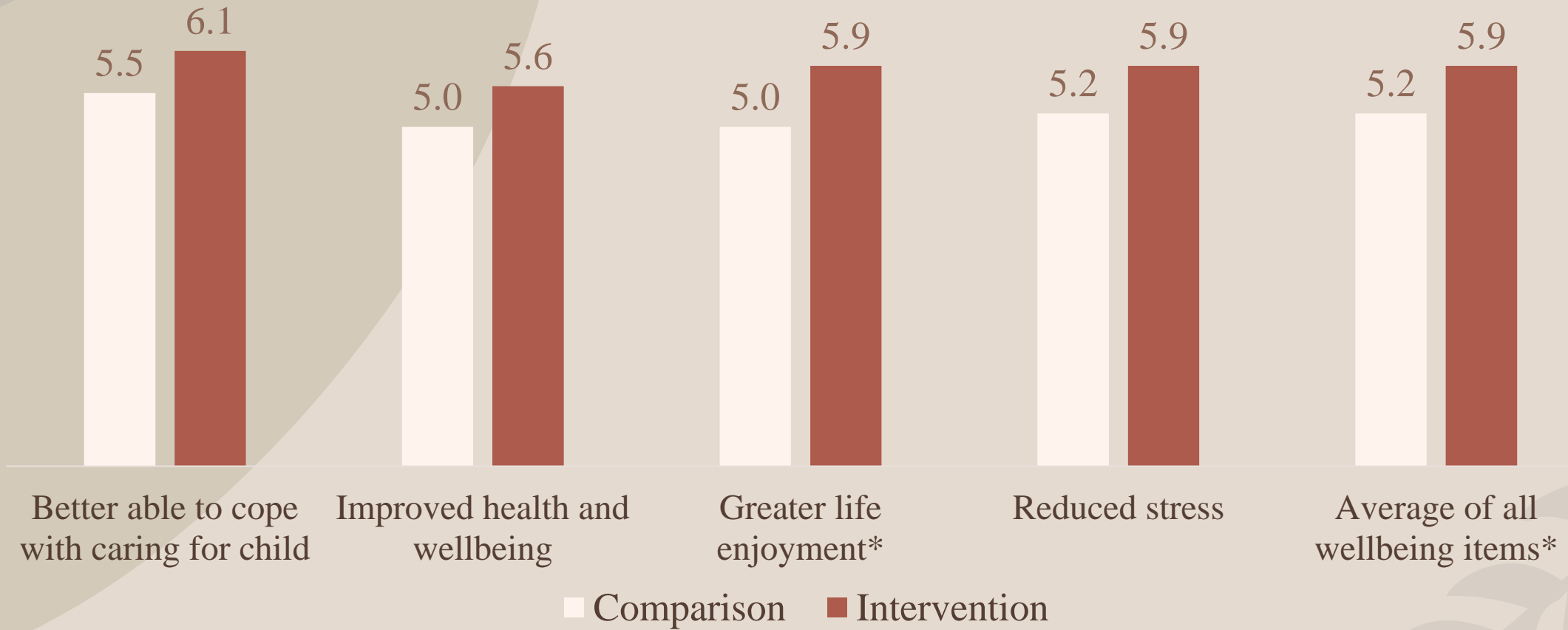


* Indicates a statistically significant result

Caregiver access to benefits

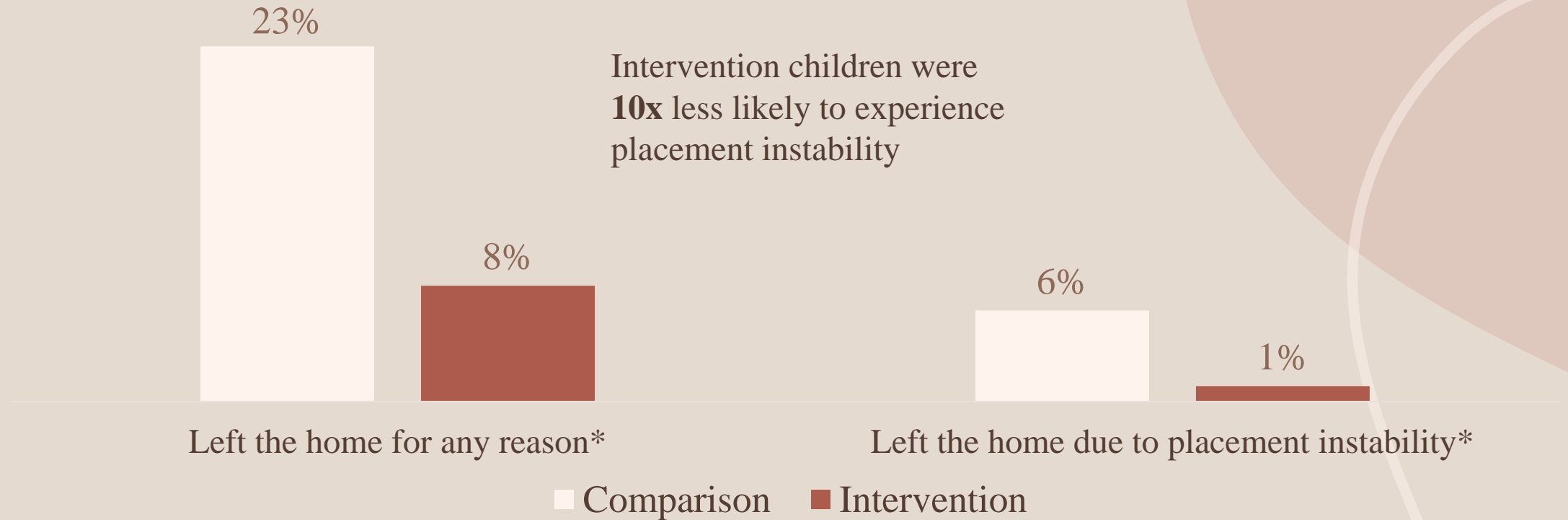


Caregiver wellbeing



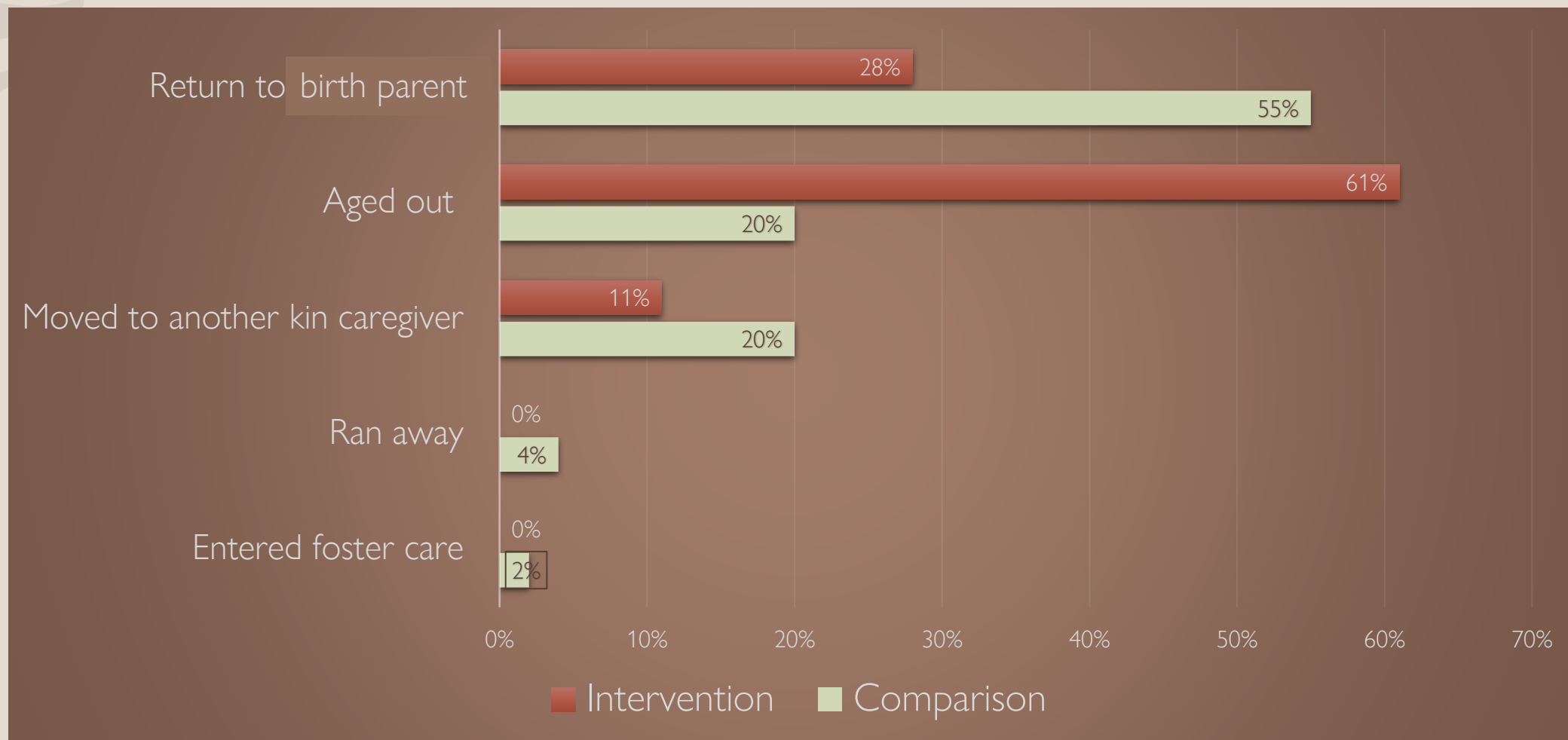
* Indicates a statistically significant result

Child placement instability



* Indicates a statistically significant result

Reasons Child Left Home



Summary of Results

Caregivers in the intervention sites:

- ❖ Had greater personal wellbeing
- ❖ Were more likely to use support groups
- ❖ Were more likely to enroll in Child-Only TANF

Children in the intervention sites:

- ❖ Had less placement instability
- ❖ Had less ER visits in the past six months



Implications

Caregiver-focused interventions can improve both caregiver and child outcomes

Caregivers in both conditions had greater access to Child-Only TANF relative to the national average

Enhanced navigation may help caregivers find cost-effective resources that prevent ER usage

Support groups may enhance caregiver and child wellbeing

Submitting results to the Title IV-E Prevention Services Clearinghouse for consideration

Title IV-E funds

```
graph LR; EB(EVIDENCE BASED) --- NP(NAVIGATOR PROGRAM); EB --- CM(CASE MANAGEMENT); EB --- APS(ALL PILOT SITES); EB --- SW(STATEWIDE)
```

NAVIGATOR PROGRAM

Current funding is state funding

CASE MANAGEMENT

Clearinghouse Submission

EVIDENCE BASED

Would allow for a 50% Federal reimbursement

ALL PILOT SITES

Case Management for all eligible kinship families

STATEWIDE

Case Management for all eligible kinship families

QUESTIONS

1

Tell us about the Kinship Navigator program in your area.

2

What will you take with you back to your community?

thank you



- Geene Delaplane
- DCYF Kinship Care and Guardianship Program Manager
- geene.delaplane@dcyf.wa.gov



- Rosalyn Alber
- ALTSA Kinship Program Manager
- rosalyn.alber@dshs.wa.gov



- Angelique Day
- University of Washington
- dayangel@uw.edu

