



Comprehensive Family Centered Approach

**Lessons Learned from the
Prevention and Family Recovery Project**

**Theresa A. Lemus, MBA, BSN, LADC
Ashay K. Shah, MSW**

**CWLA 2016 National Conference
August 2016**






Acknowledgements

The Prevention and Family Recovery Project is generously supported by:

The Doris Duke Charitable Foundation
The Duke Endowment



PFR Project Partners

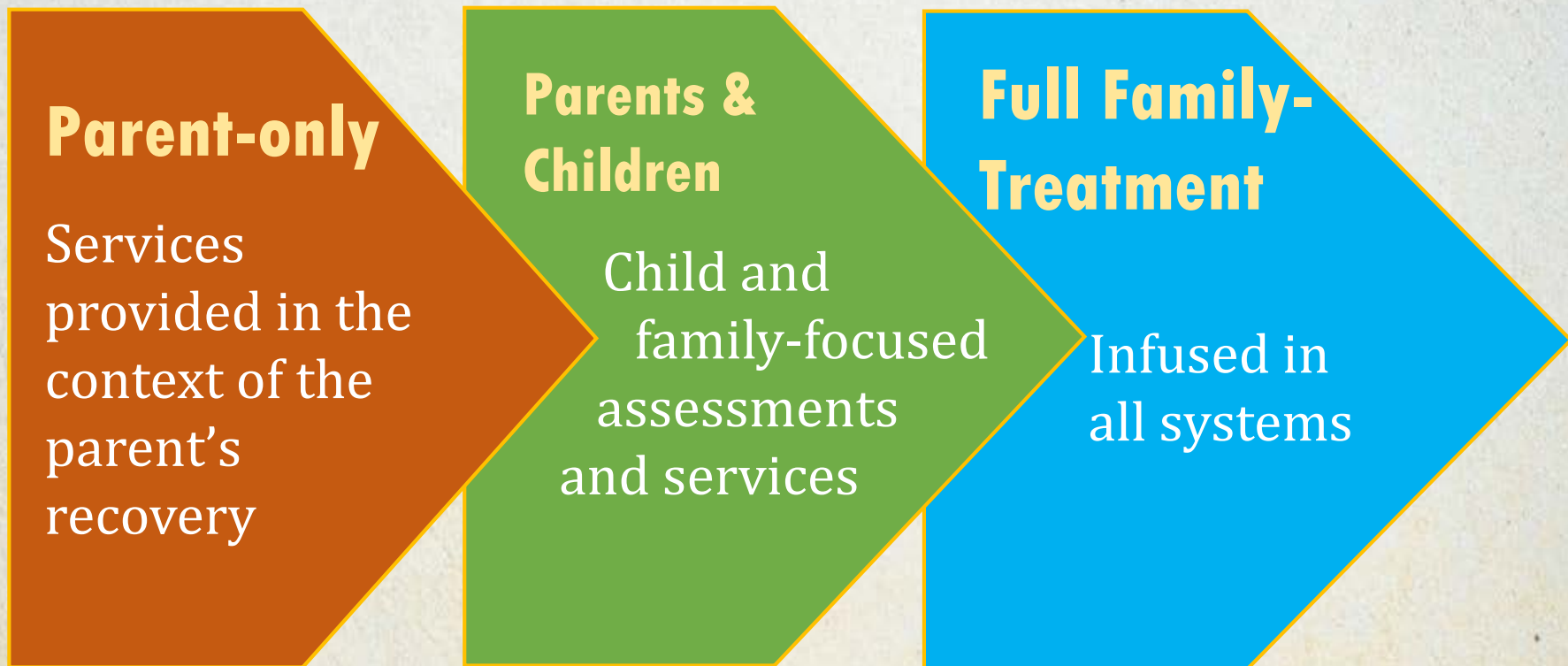
- **Children and Family Futures**
 - Providing intensive TA, training and support for grantees
 - Evaluating PFR and disseminating lessons learned
 - **Doris Duke Charitable Foundation**
 - Supporting three FDC grantees nationally
 - **The Duke Endowment**
 - Supporting a fourth FDC grantee in North Carolina
 - **PFR National Advisory Council**
 - Providing input and guidance on PFR
 - Providing expert consultation to grantees on key implementation issues
 - **The Four PFR Grantees**
- 

Learning Objectives

- **Family centered approach**
- **Lessons learned from PFR**
- **Outcomes**



FDC Practice Improvements



Mission



The Prevention and Family Recovery (PFR) initiative seeks to demonstrate how a **comprehensive family-centered** FDC approach—grounded in effective cross-systems **collaboration** and **evidence-based practices**—improves child, parent and family **outcomes**, particularly in the areas of child abuse and neglect, reunification and parent-child relationships.

PFR Project Goals



**Expand the
Service Array
for FDC
Families**

**Identify
Breakthrough
Strategies
and
Disseminate
Lessons
Learned**

**Improve FDC
Capacity**

The PFR initiative....

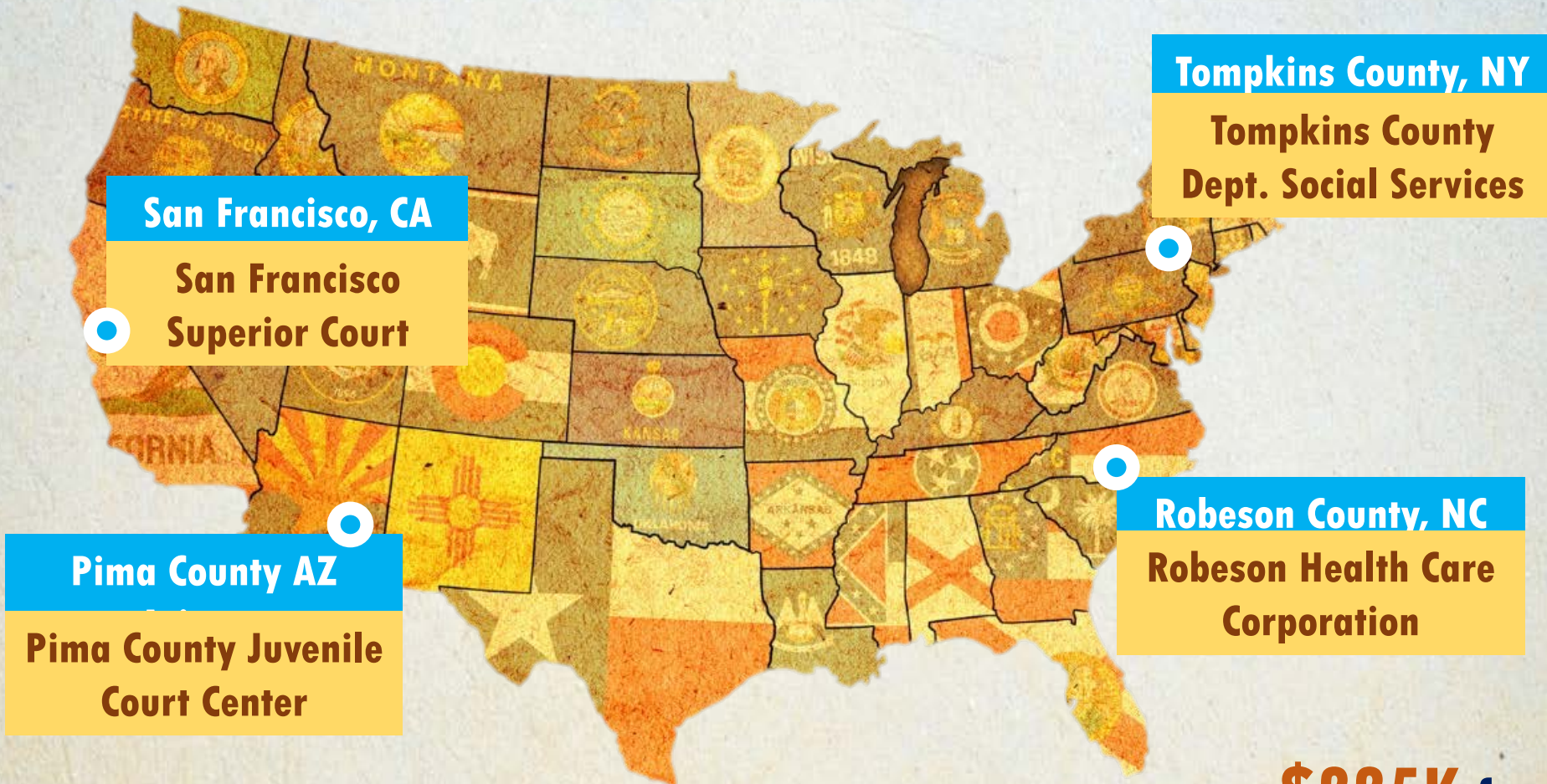
Is NOT:

A
narrowly
defined
project
simply
about
adding
parenting
and child
services
to the
menu

IS about:

Broader, sustainable
systems improvements
that **transform** the way
FDCs and its collaborative
partners **serve families**

PFR Grantees



\$225K for
PFR project period
April 2014 – May 2016

	Staff Enhancement	Parenting/Parent-Child Services	Child Services
Pima (AZ)		<ul style="list-style-type: none"> • Incredible Years • Child-Parent Psychotherapy 	<ul style="list-style-type: none"> • Incredible Years Dinosaur School • Parent-Child Relationship Therapy
Robeson (NC)		<ul style="list-style-type: none"> • Celebrating Families! • Parents as Teachers 	<ul style="list-style-type: none"> • TF-CBT
San Francisco (CA)	<ul style="list-style-type: none"> • Children's Services Coordinator • Public Health Nurse 	<ul style="list-style-type: none"> • SafeCare 	
Tompkins (NY)	<ul style="list-style-type: none"> • CW Liaison 	<ul style="list-style-type: none"> • Strengthening Families Program • SafeCare 	

What we know....

About the importance of parent/child relationships



5 Reasons Why FDCs Should be about Families



- 1) Substance Use Disorder affects the whole family**
- 2) FDC model is well-positioned to support family unit**
- 3) Engages parents in their recovery**
- 4) Achieve better outcomes and sets families for long-term success**
- 5) Kids go home, stay home, or find home**

1) Substance use disorder affects the entire family system

Mothers demonstrate less responsiveness and warmth and more authoritarian and punitive parenting styles with their children.

Fathers show less sensitivity, engagement, and effective discipline during interactions with their children



2) FDC model is well-positioned to support family unit

FDC Model & Unique Focus

Judicial Oversight



Drug Court
Hearings



Therapeutic
Jurisprudence



Intensive Case
Management &
Recovery Support



Enhanced
Family-Based
Services

Comprehensive Services

3) Engages parents in their recovery

- Parenting combined with substance use treatment results in **positive outcomes** (Neger & Prinz, 2015)
- Two primary engagement components:
 - Behavioral – Active participation
 - Attitudinal – Participation perceived as worthwhile and beneficial

Parenting interventions affirm their primary identity as a mother and father and focuses on the most important need —to reunite with their children

4) Achieve better outcomes and sets families for long-term success

- FDCs with the inclusion of two evidence-based parenting programs offered **timelier route to reunification** than traditional dependency court. Families in FDCs were nearly **twice as likely to reunify** and **hundreds of days more quickly** (Brook et al, 2015)
- Outcomes from CAM initiative

5) Kids go home, stay home, or find home

85% of children in substantiated abuse and neglect cases either **stay home or go home**

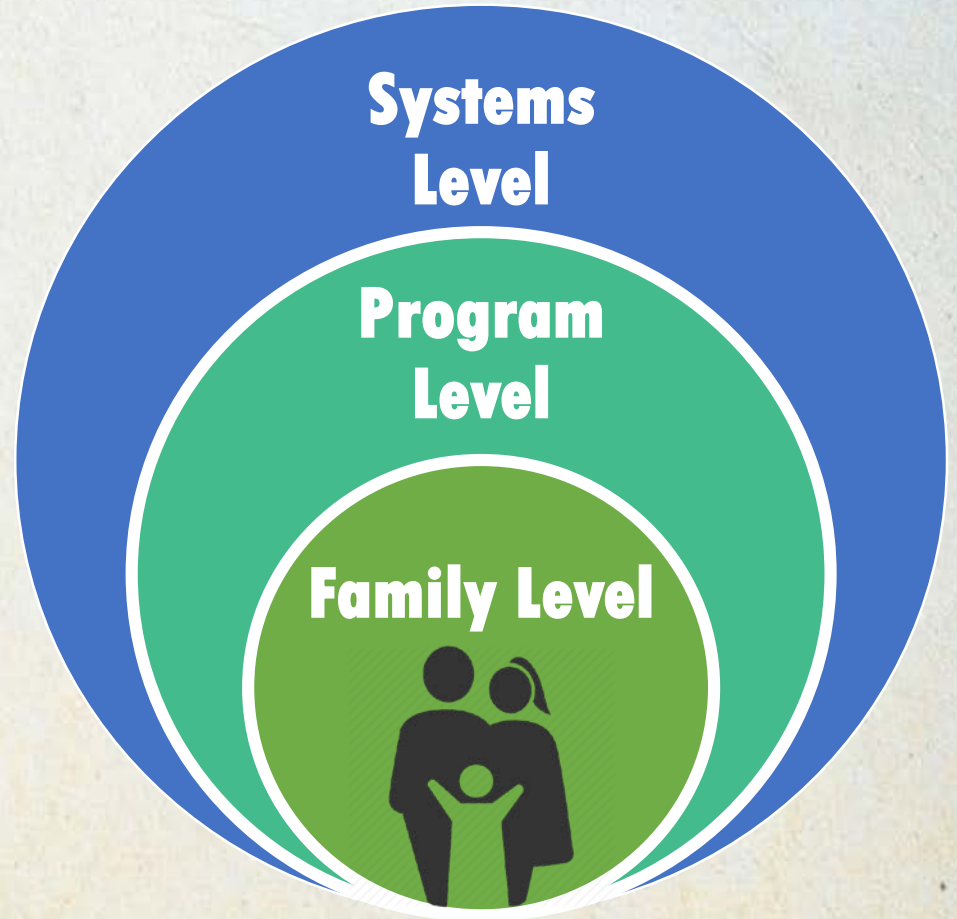
“the remarkable ability to find their way home, even across huge and disorienting distances”

What we learned....

Lessons learned from the PFR initiative



PFR is about sustainable **systems improvements** that **transform** the way FDCs and its collaborative partners **serve families**



Systems Level

Increased and Renewed Focus on Cross-Systems Collaborative Partnerships

- **Mechanisms:**
 - **Leadership**
 - **Governance Structure**
 - **Evaluation Capacity**



The Collaborative Structure for Leading Change



Different Sides of the Same Coin

Leadership



Evaluation
Capacity



Governance



**Program
Level**

Developing the “Evidence-based Practice Capacity” of Sites is a Complex Undertaking

- **Mechanisms**
 - **Planning and EBP selection**
 - **Understand and map existing community landscape**
 - **Clarity of Roles and Responsibilities**
 - **Universal assessment and referral protocols**
 - **Communication protocols and information exchange**

Promising Practices for Program Level Collaboration, Connections, and Information Sharing



- **Dedicated/co-located FDC Liaisons from various partner agencies**
- **New or Restructured Clinical and FDC Staffings**
- **Service coordinators**

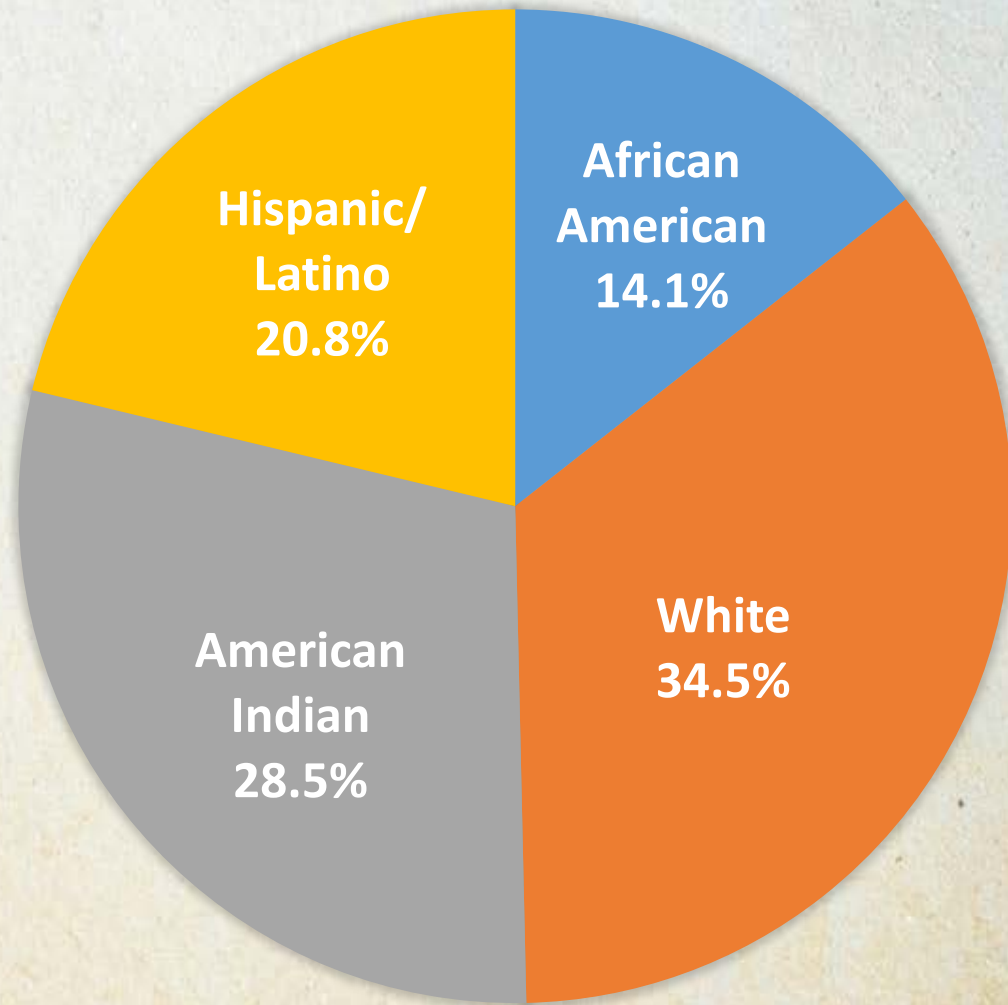
Family Needs

The needs of families are **complex**

- **SUD disorders are associated with a host of other negative risk factors for children including other forms of parental mental health disorders (e.g., depression and antisocial behaviors) and family adversity.**
- **Effective FDCs connect families to a needed array of treatment and support services**

Who are PFR Grantees Serving?

CHILD RACE



398 Adults

- 75% Female
- 31 years old (average)
- 83% Unemployed
 - 37% looking for work
 - 62% not looking for work

593 Children

- 50% Female and 50% Male
- 50% age 0 to 3
- 80% of kids out of home at program entry

Parenting Needs

On each domain, being at or above baseline at the time of case closure is statistically predictive of successful reunification.

Top Family Needs at Intake

70.1%

61.5%

53.8%

53.5%

52.5%

51.9%

51.7%

Caregiver
Employment

Family Income

Resolve Legal
Issues

Parent MH

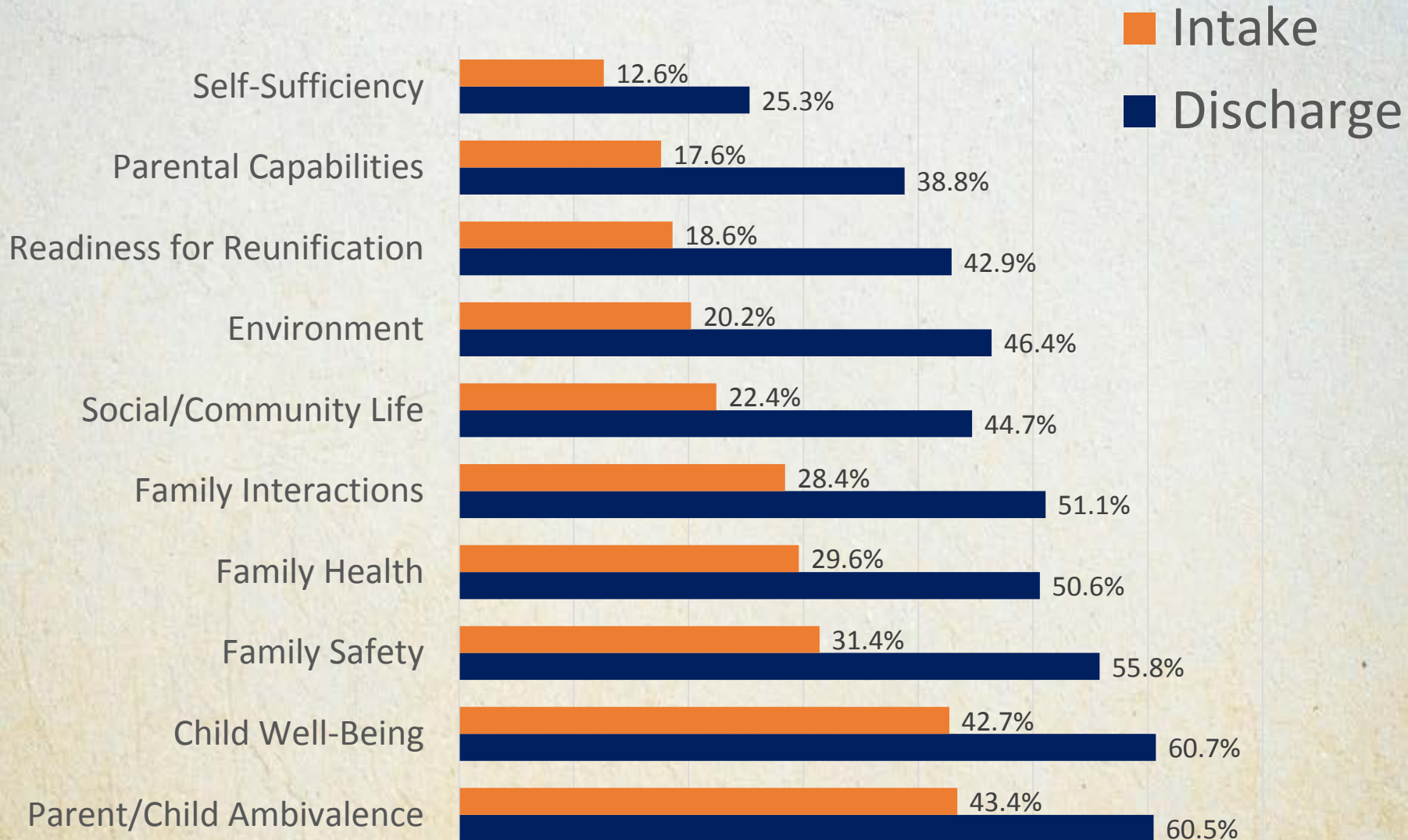
Relationship
bw Parents

Financial Mgt

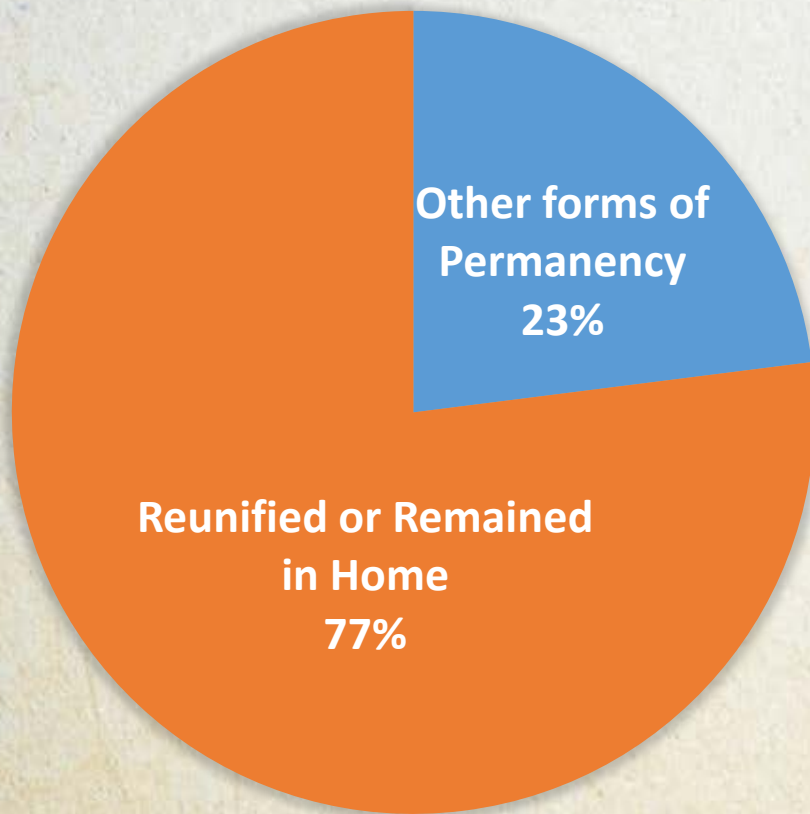
Housing
Stability



Changes in Family Functioning - Strengths at intake and discharge



Outcomes

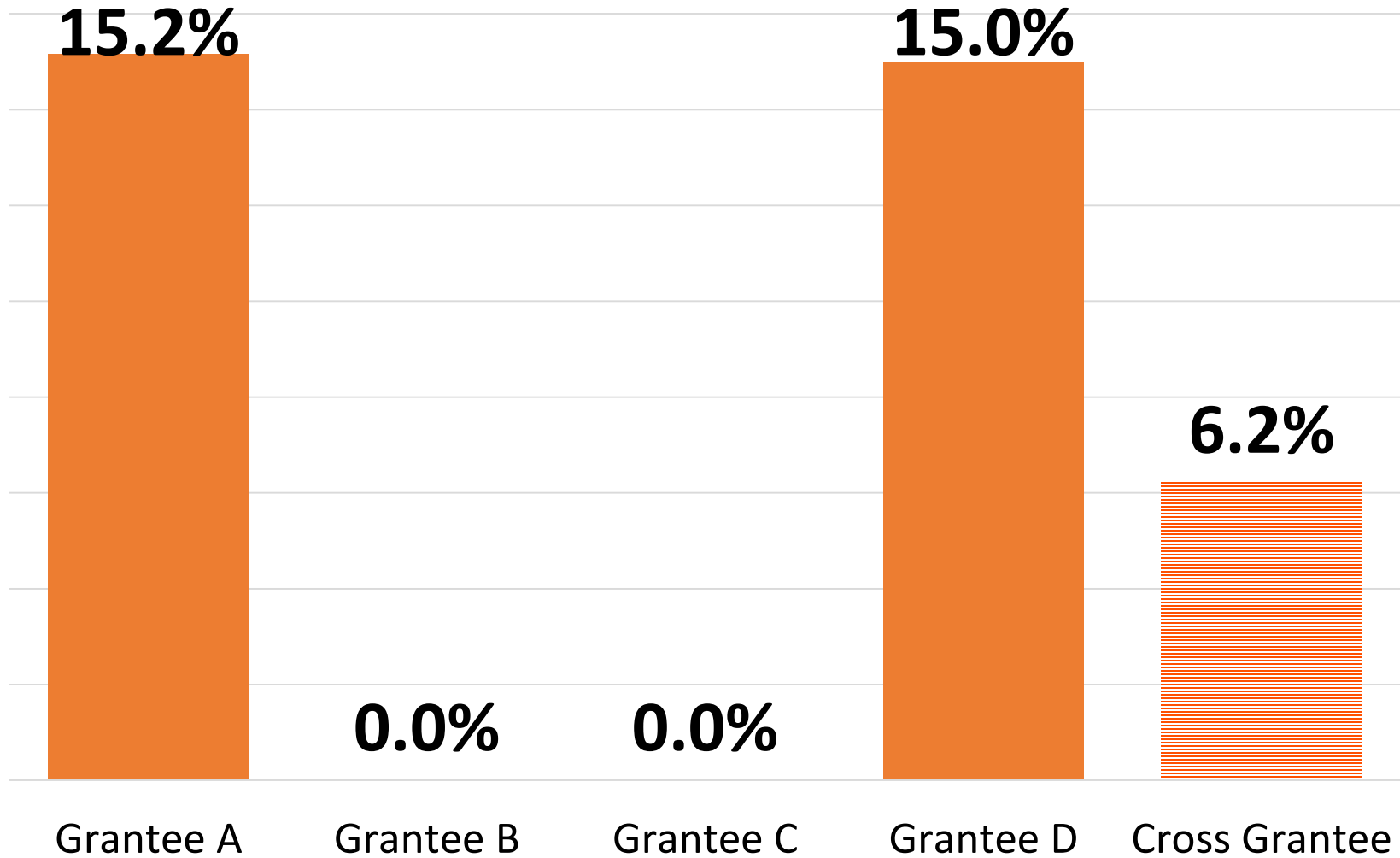


Tompkins Reunification:
November 2013-October
2014 - **38 percent**

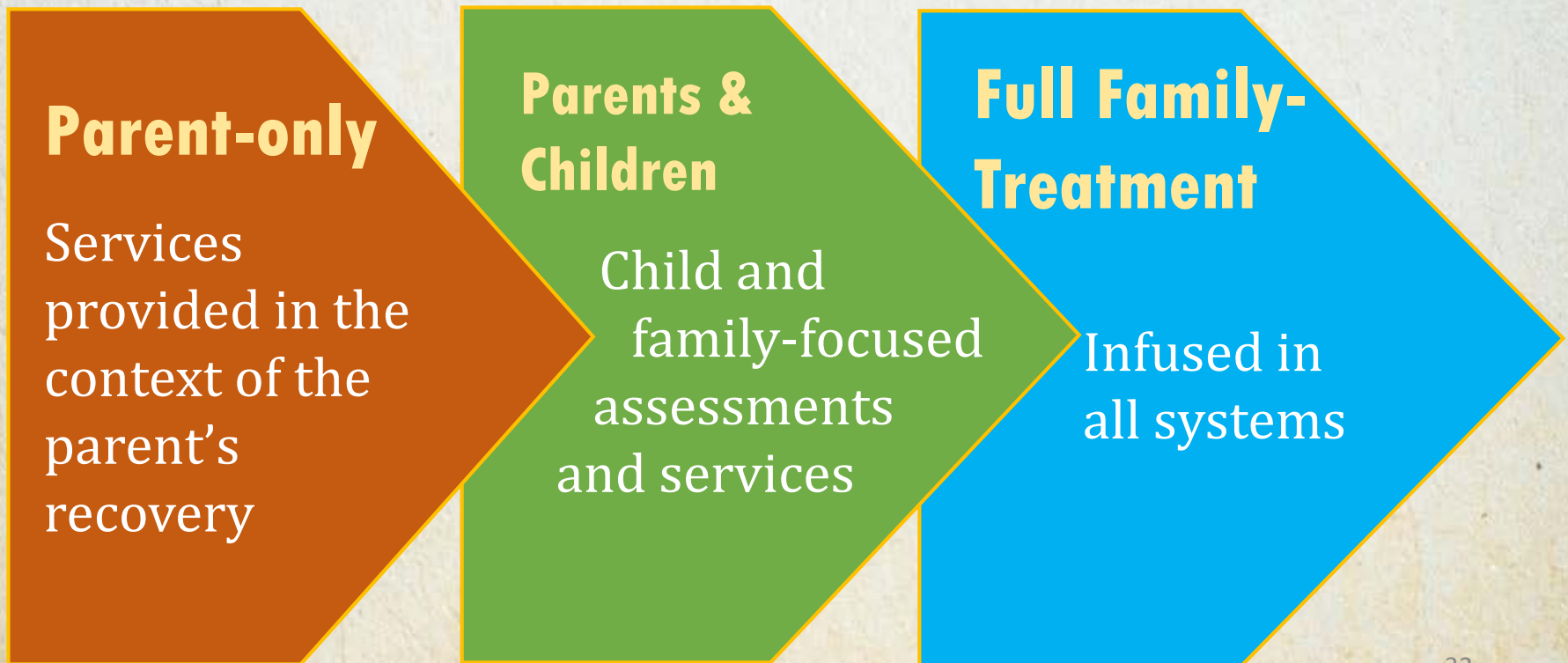
November 2014-October
2015 - this number increased
to **73 percent.**

Re-Entry into Foster Care

N = 177 reunifications



PFR is about broader, sustainable systems improvements that transform the way FDCs and its collaborative partners serve families





Q&A and Discussion



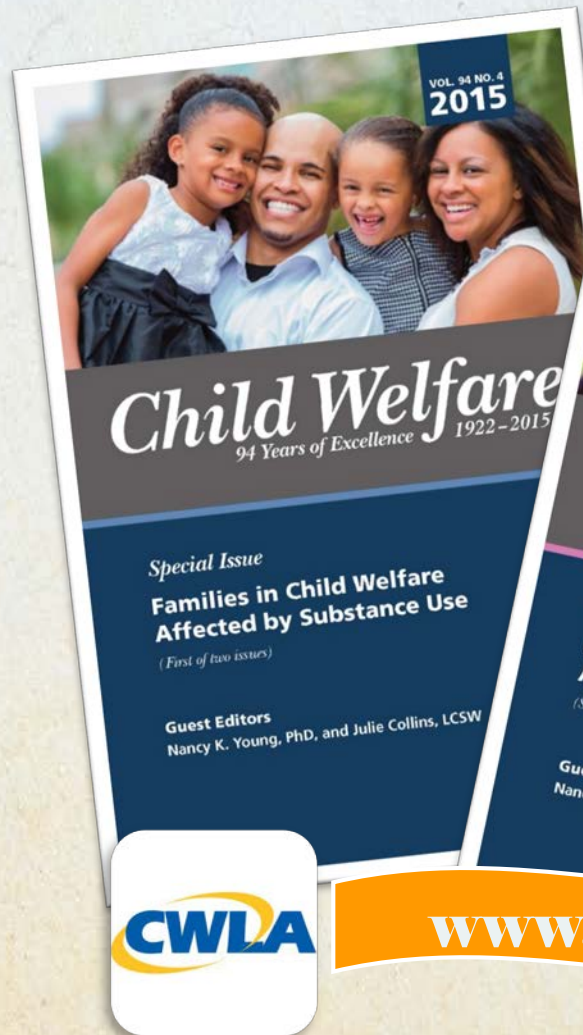
Resources



2015 Special Issue

Includes four Family Drug Court specific articles presenting findings on:

- Findings from the Children Affected by Methamphetamine (CAM) FDC grant program
- FDC program compliance and child welfare outcomes
- Changes in adult, child and family functioning amongst FDC participants
- Issues pertaining to rural FDCs



CWLA

www.cwla.org

*Improving outcomes for children
and families affected by
substance use disorders*



www.cffutures.org



Theresa Lemus, MBA, BSN, LADC
Senior Program Associate

25371 Commercentre Drive, Suite 140
Lake Forest, CA 92630
(714) 505-3525
tlemus@cffutures.org

Ashay Shah, MSW
Program Associate

25371 Commercentre Drive, Suite 140
Lake Forest, CA 92630
(714) 505-3525
ashah@cffutures.org