



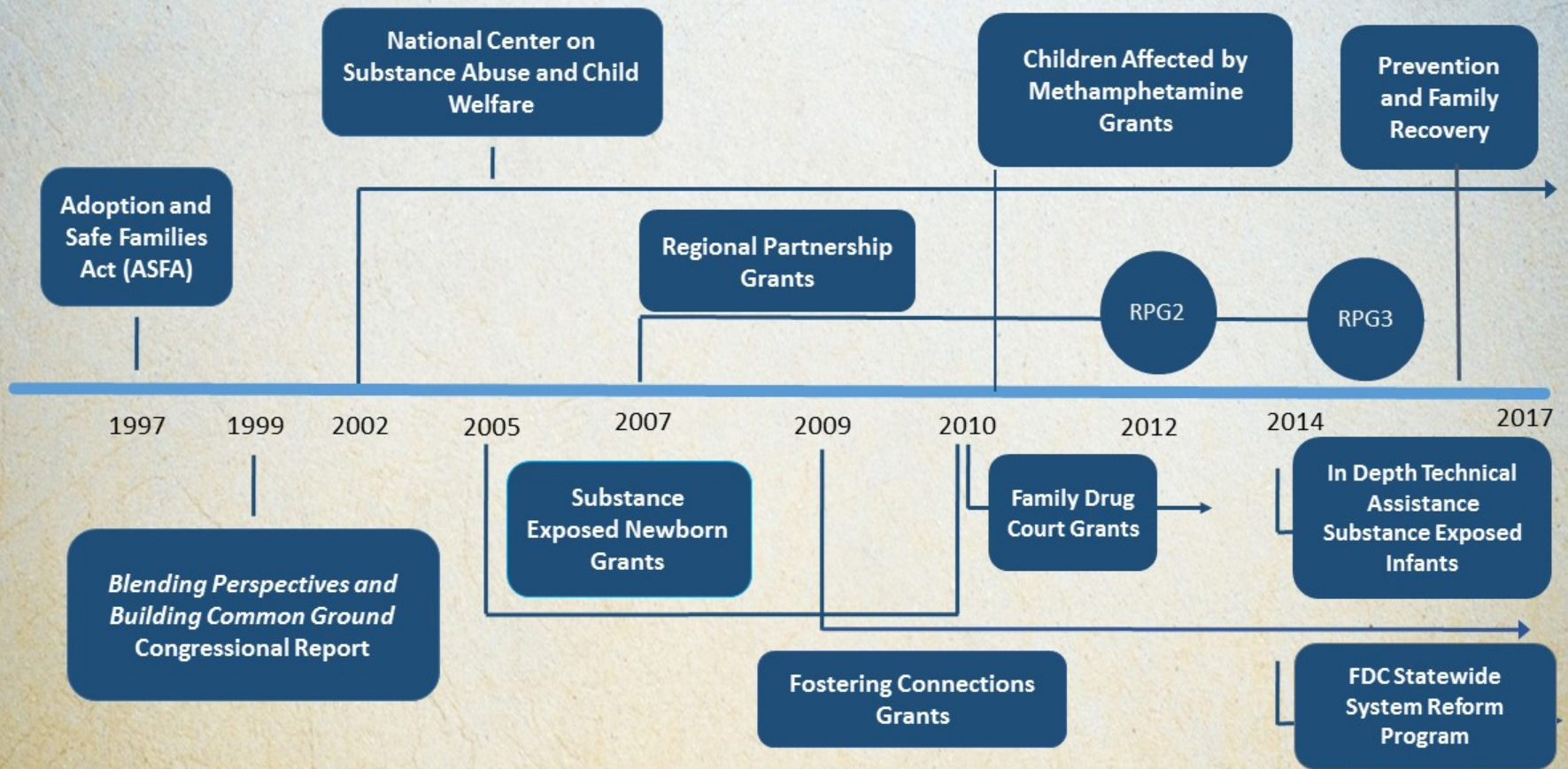
Linda Carpenter, M.Ed.
Russ Bermejo, MSW
Children and Family Futures

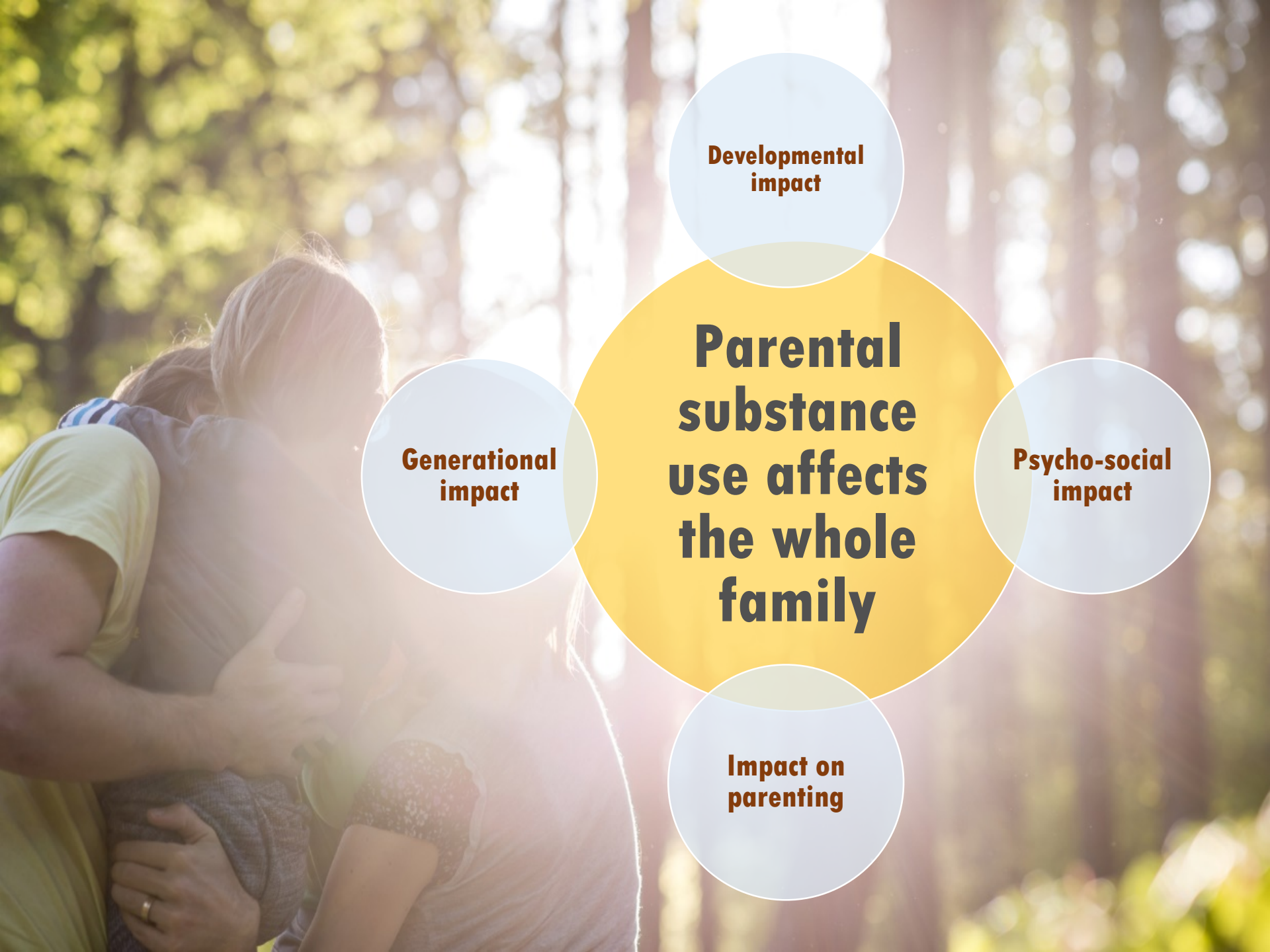
Children's Services and Parenting Interventions for Families Affected by Substance Use and Child Welfare



August 3, 2016

Federal Initiatives: Progress Since the Adoption and Safe Families Act (ASFA)





**Developmental
impact**

**Parental
substance
use affects
the whole
family**

**Psycho-social
impact**

**Generational
impact**

**Impact on
parenting**

Impact on the Child

- Executive functioning problems, inability to self-regulate and to generalize across situations
- Gross and fine motor delays
- Attention problems
- Memory difficulties
- Attachment disorders

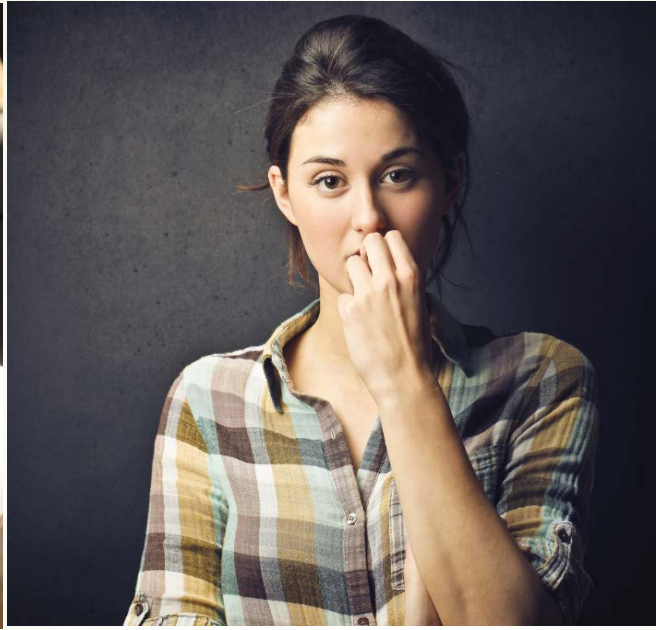


Postnatal Environment – Impact of Living in Substance Abusing Family

The potential impact on the child can range from:

- Severe, inconsistent or inappropriate discipline
- Neglect of basic needs: food, shelter, clothing, medical care, education, supervision
- Situations that jeopardize the child's safety and health
- Trauma as a result of all of the above as well as from removal
- Disruption of parent/child relationship, child's sense of trust, belonging
- Chronic trauma of childhood

We Know the Costs: Children of Parents with a Substance Use Disorder



- They are children who arrive at kindergarten not ready for school
- They are in special education caseloads
- They are disproportionately in foster care and are less likely to return home
- They are in juvenile justice caseloads
- They are in residential treatment programs
- They develop their own substance use disorders

“I wish my parents received drug treatment”

Stay home
Go home
Find home

*“the remarkable ability to find their way home,
even across huge and disorienting distances”*



Understand Challenges for Parents

- The parent may lack understanding of and ability to cope with child's medical, developmental, behavioral and emotional needs
- The child's physical and/or developmental needs were not assessed, or the child did not receive appropriate interventions/treatment services for identified needs
- The parent and child did not receive services that addressed trauma (for both of them) and relationship issues
- They no longer have access to supportive services
- Mother is experiencing tremendous guilt

Family Recovery

Needs



PARENTS

- Parenting skills and competencies
- Family connections and resources
- Parental mental health; co-occurring
- Medication management
- Parental substance use
- Domestic violence

FAMILY

- Basic necessities
- Employment
- Housing
- Child care
- Transportation
- Family counseling

CHILD

- Well-being/behavior
- Developmental/health
- School readiness
- Trauma
- Mental health
- Adolescent substance use
- At-risk youth prevention



**Child well-being
occurs in the context
of relationships**



Relationships



**Adult recovery should
have a parent-child
component**



Scope of Services



An effective cross-system response should provide the scope of services needed to address the effects of parental substance use on family relationships - *family-based and family-strengthening approaches* towards recovery.

Parent-Child: Key Service Components

**Developmental &
Behavioral
Screenings and
Assessments**

**Quality and
frequent
visitation**

**Early and ongoing
peer recovery
support**

**Parent-Child
Relationship-
Based
Interventions**

**Evidenced-Based
parenting**

Trauma

**Community and
auxiliary support**



Q&A and Discussion



Resources



National Center on
Substance Abuse and Child Welfare

Bringing Systems Together for
Family Recovery, Safety, and Stability

National Center on Substance Abuse and Child Welfare

Visit: www.ncsacw.samhsa.gov

Contact Information

Linda Carpenter, M.Ed.

Program Director

In-Depth Technical Assistance

lcarpenter@cffutures.org

(714) 505-3525

Russ Bermejo, MSW

Senior Program Associate

rbermejo@cffutures.org

(714) 505-3525



**National Center on
Substance Abuse and Child Welfare**

**Bringing Systems Together for
Family Recovery, Safety, and Stability**