



# HarborHouse

of Central Florida

## **Evidenced Based System Change through Collaboration**

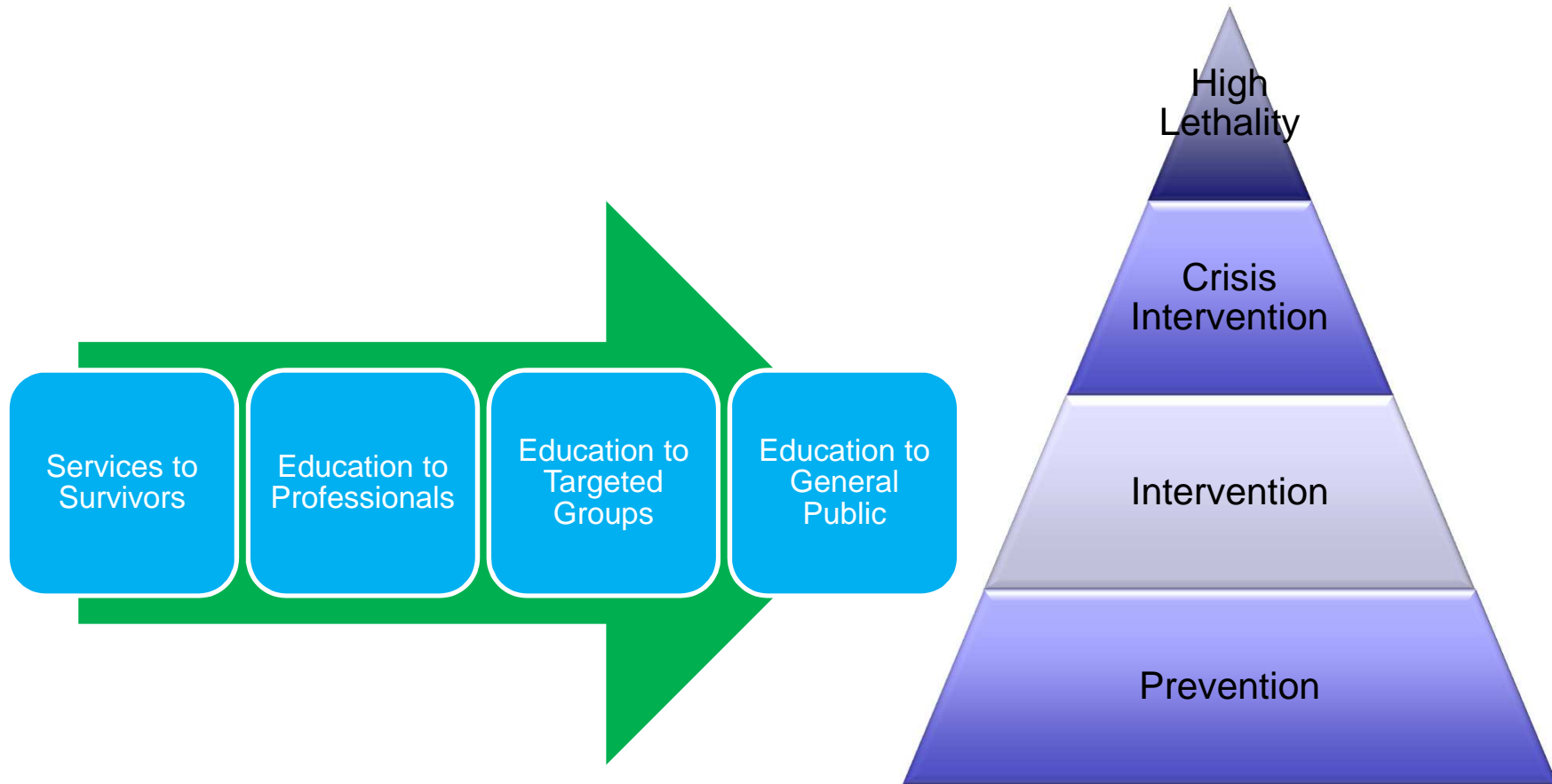


# Theory of Change

## Mission Statement

Harbor House seeks to eliminate domestic abuse by providing safety, shelter, education, counseling and justice.

# Harbor House Logic Model





# Why Measure Impact?

- How else would we know if what we are doing works?
- Helps gain buy in from others
- Funders demand it!
- It makes a strong case for support for additional funding



# How do we measure impact?

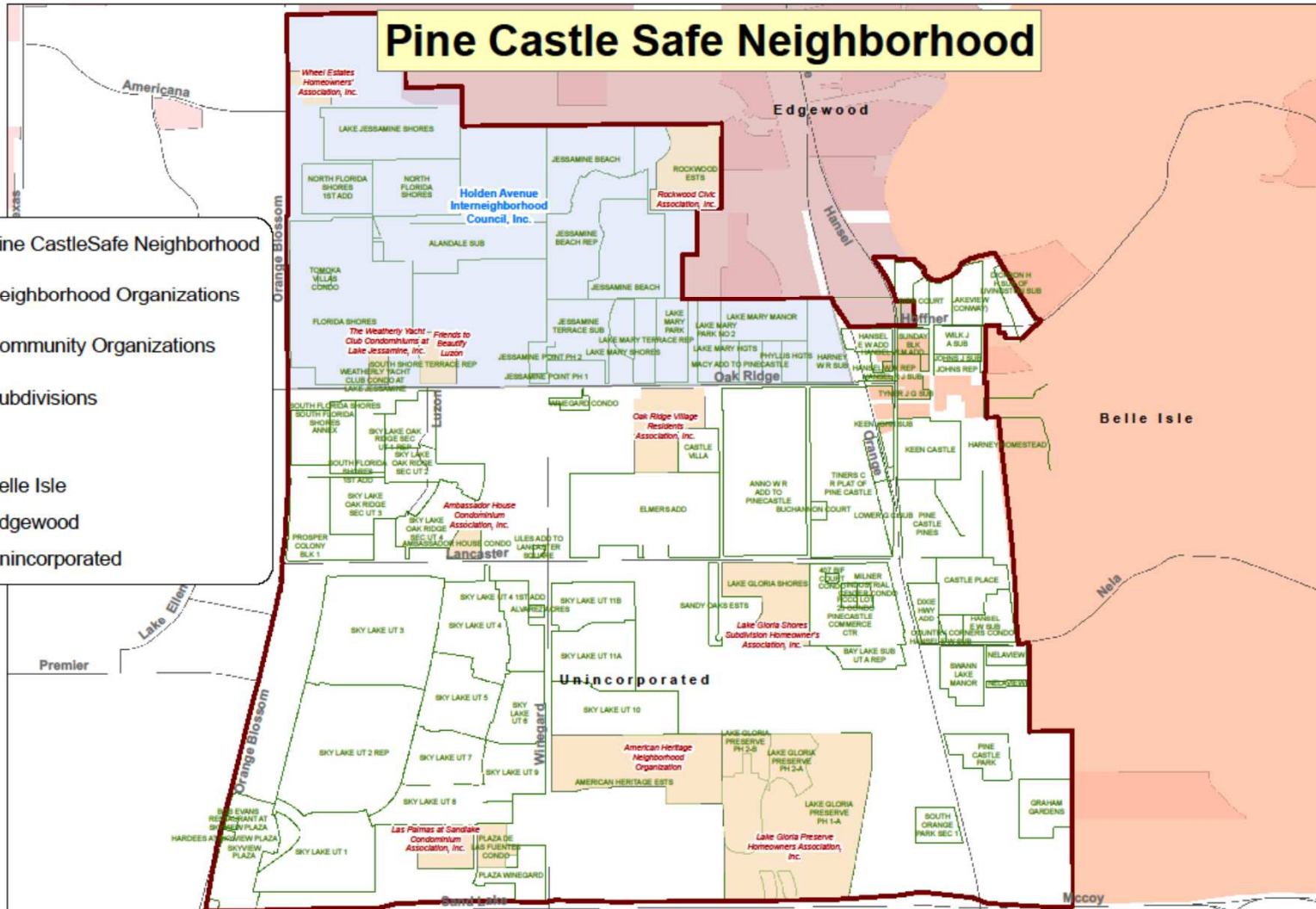
- Start with your theory of change
- Know what your desired outcome is
- Baseline is critical
- Follow up – long term impact
- NOT Heads in beds or numbers served
- Partner with Universities



- 1 zip code
  - Mapping for baseline
- Follow up 6 month and 1 year
  - Put \$ to outcomes

# Pine Castle Safe Neighborhood

-  Pine Castle Safe Neighborhood
-  Neighborhood Organizations
-  Community Organizations
-  Subdivisions
-  Belle Isle
-  Edgewood
-  Unincorporated



# Central Component

- Recognize
- Respond
- Refer







First Responders

Faith Community

Individuals



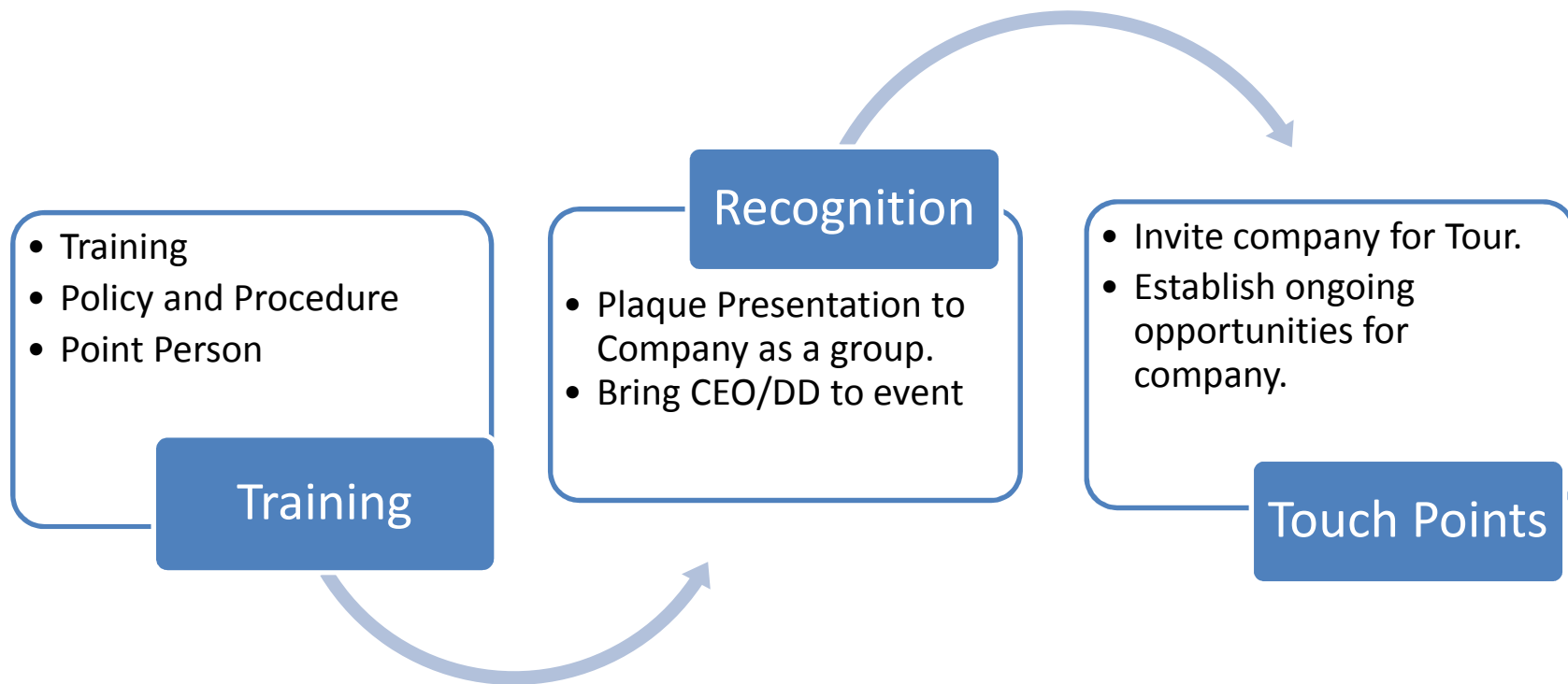
Business

Leaders of Courage  
Youth

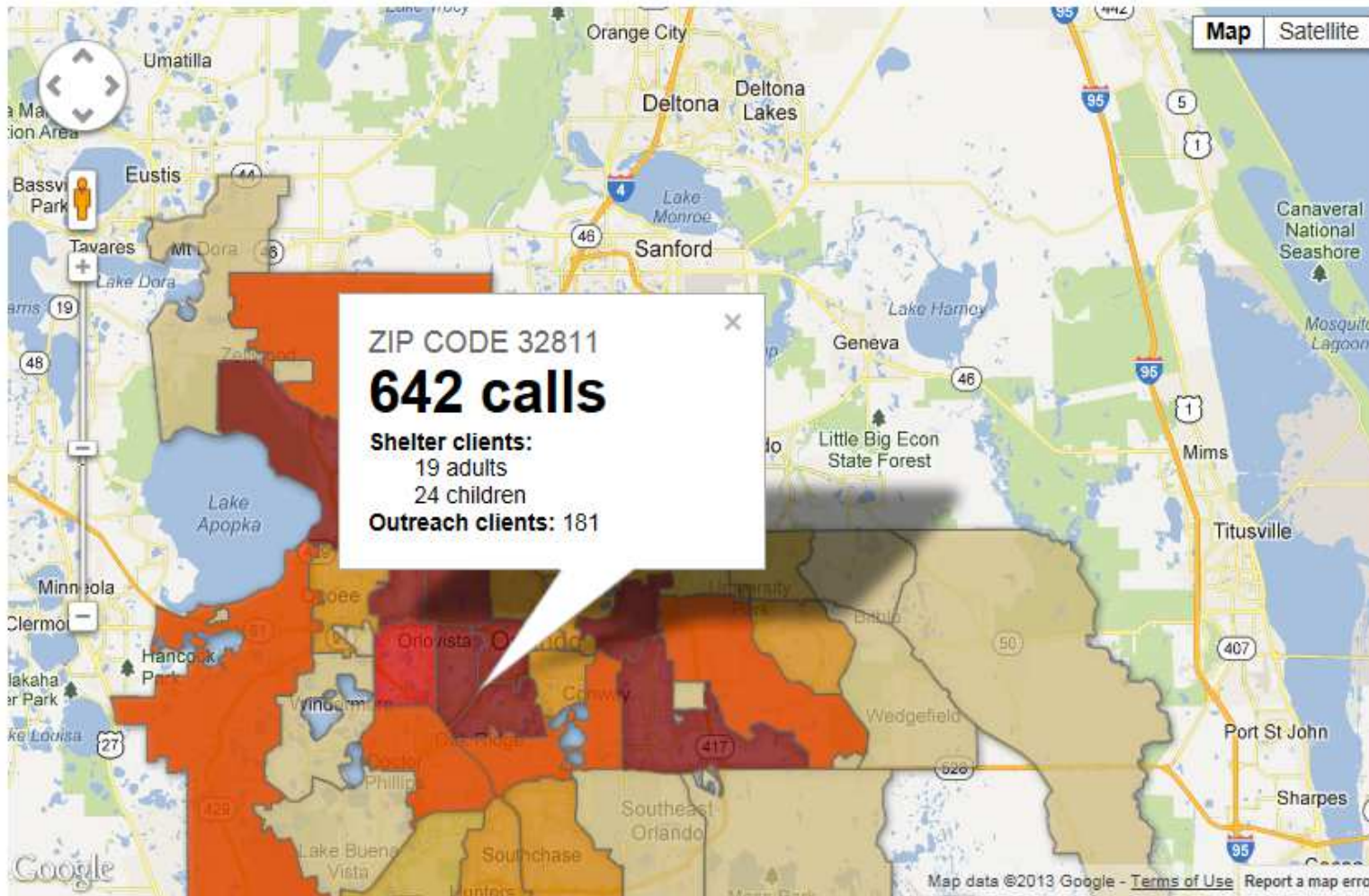
# Case for Support



# Business Initiative Pipeline:



Click on each zip code to see domestic violence calls to law-enforcement agencies in Orange County in 2011.



## RESPONDING TO EMERGENCIES



THE AVERAGE COST OF A 911 CALL & SUBSEQUENT INVESTIGATION

\$ 1,001



THE NUMBER OF 911 CALLS IN RESPONSE TO INCIDENTS OF DOMESTIC VIOLENCE

8,500



TOTAL COST TO RESPOND TO *REPORTED* DOMESTIC VIOLENCE EMERGENCIES

\$ 8,508,500

DOMESTIC VIOLENCE AFFECTS EVERYONE:

A FRIEND, A TEACHER, A CO-WORKER, A FAMILY MEMBER, A CHILD...YOU.

## RESPONDING TO HOMICIDE

27 *deaths*

THAT MEANS, ON AVERAGE, A PERSON DIED EVERY 2 WEEKS.

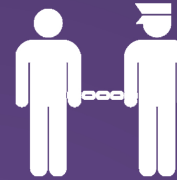


TOTAL COST TO RESPOND TO DOMESTIC VIOLENCE HOMICIDES

\$66,960

(THIS DOESN'T INCLUDE THE DEVASTATING TOLLS ON VICTIMS' LOVED ONES)

## RESPONDING TO CRIME



4,697 BATTERERS ARRESTED



INCARCERATION COSTS  
PUBLIC DEFENDER COSTS  
CLERK OF COURTS COSTS

TOTAL COURT COSTS FOR THOSE ARRESTED FOR DOMESTIC VIOLENCE

\$ 9,492,637

## RESPONDING TO CHILD ABUSE

3168 CHILD ABUSE INVESTIGATIONS

1025 CHILDREN REMOVED FROM THEIR HOMES

67 CHILDREN PUT INTO FOSTER CARE

TOTAL COST TO RESPOND TO CHILD ABUSE RELATED TO DOMESTIC VIOLENCE

\$ 6,373,250

DOMESTIC ABUSE COSTS EVERYONE.

TOTAL COST TO ORANGE COUNTY TAXPAYERS  
\$ 24,441,347\*

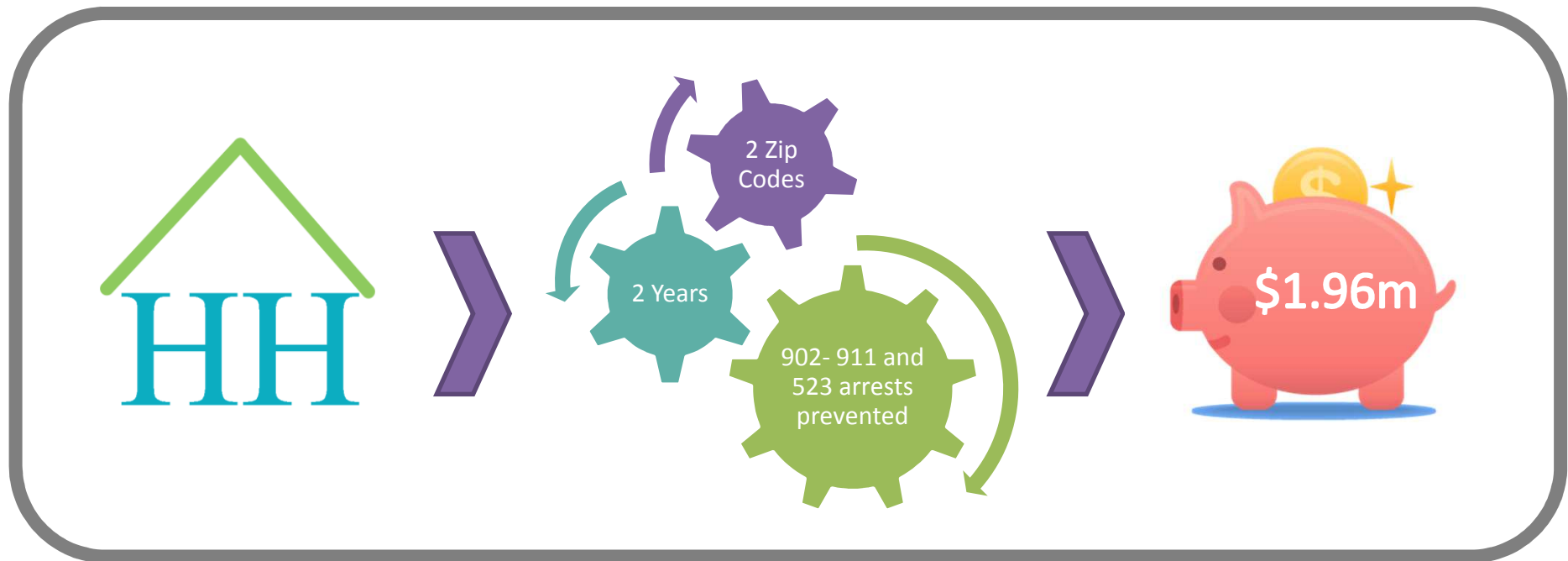
\*CALENDAR YEAR 2011



# Before Project Courage Countywide



# The Solution. Community by Community

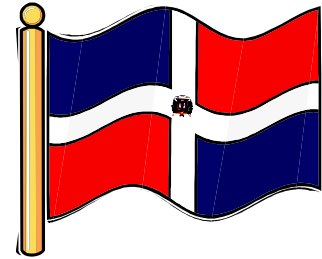


# Expansion

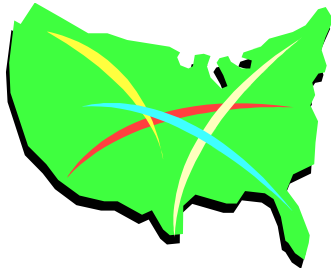
R3 App



Key Business

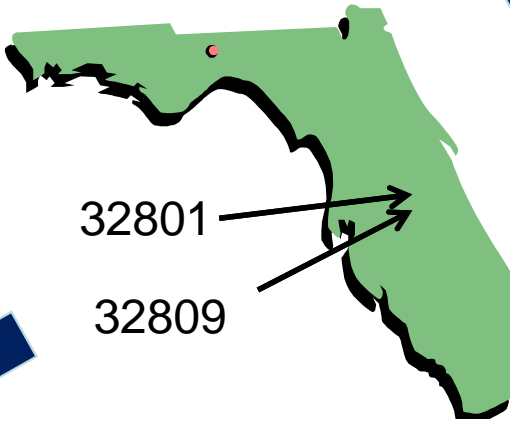


Hospitals  
Systems



32801

32809



Project  
Courage





# Take Aways

- Use Proven Tools to start
  - don't make up your own crap
- Don't reinvent the wheel
  - use programs that work
- Partner with Universities for free
  - legitimacy and publishing



# Take Aways

- Know your costs
  - and make sure you can back it all up
- Get the word out
  - social media, print, website
  - encourages others to join
- Go that extra mile for your partners
  - acknowledge them, give them credit
  - Give it away for FREE
  - stretch to help them

# HarborHouse

of Central Florida

Logic Model narration

<http://logicmodel.fmhi.usf.edu/narrations/SOCpages/OrlandoFL.html>

Impact Report

<http://www.harborhousefl.com/2013/01/2012-impact-report/>

Key Business Initiative

<http://www.harborhousefl.com/2012/09/domestic-violence-in-the-workplace-we-can-help/>

Questions??

Carol Wick, CEO

[cwick@harborhousefl.com](mailto:cwick@harborhousefl.com)

**24-Hour Crisis Hotline 407-886-2856**

**Administration 407-886-2244**

**[www.harborhousefl.com](http://www.harborhousefl.com)**