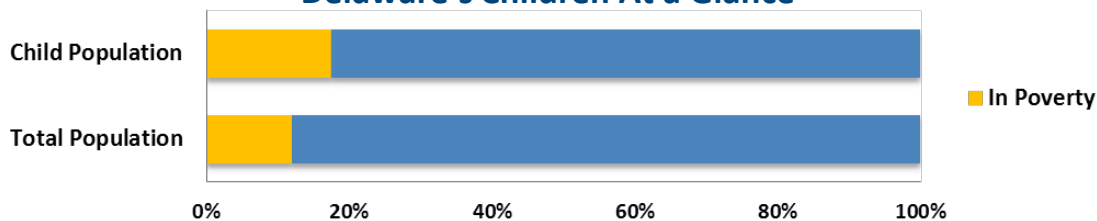


DELAWARE'S CHILDREN

Delaware's Children At a Glance¹



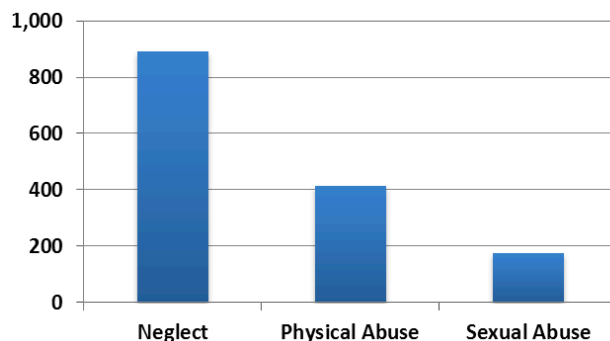
State Population².....907,135
 Population, Children Under 18³.....204,625
 State Poverty Rate⁴.....11.9%

Poverty Rate, Children Under 18⁵.....17.5%
 Poverty Rate, Children Ages 5-17⁶.....15.4%
 Poverty Rate, Children Under 5⁷.....20.7%

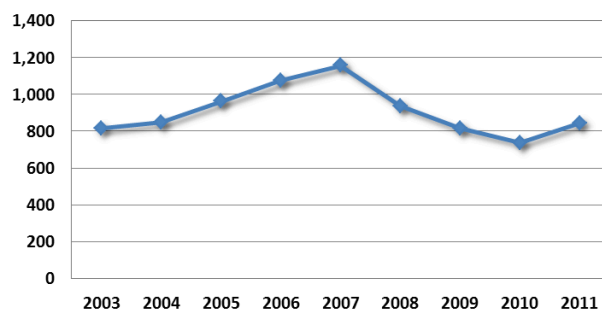
CHILD ABUSE AND NEGLECT

- In 2011, Delaware had 13,784 total referrals for child abuse and neglect. Of those, 7,347 reports were referred for investigation.⁸
- In 2011, 2,466 children were victims of abuse or neglect in Delaware, a rate of 12.0 per 1,000 children, representing a 10.6% increase from 2010. Of these children, 36.2% were neglected, 16.8% were physically abused, and 7.1% were sexually abused.⁹
- The number of child victims has increased 16.5% in comparison to the number of victims in 2007.¹⁰
- In 2011, 1 children in Delaware died as a result of abuse or neglect.¹¹
- In 2011, 845 children in Delaware lived apart from their families in out-of-home care, compared with 739 children in 2010. In 2011, 233 of the children living apart from their families were age 5 or younger, and 176 were 16 or older.¹²
- The number of children living apart from their families in out-of-home care has decreased 27.0% in comparison to the number of children in out-of-home care in 2007.¹³
- Of Delaware children in out-of-home care in 2011, 34.1% were white, 52.4% black, 8.6% Hispanic, 0.1% American Indian/Alaskan Native, 0.4% Asian or Pacific Islander and 4.1% of more than one race or ethnicity.¹⁴

Number of Child Victims, 2011
by type of abuse



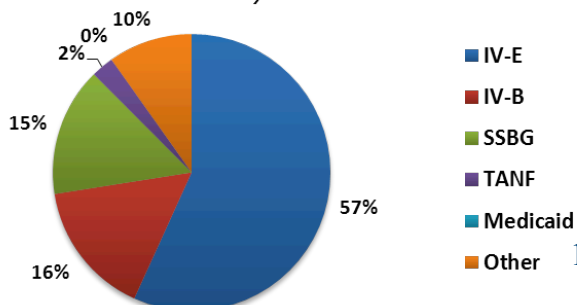
Number of Children in Foster Care, 2003-2011



ADOPTION, KINSHIP CARE, AND PERMANENT FAMILIES FOR CHILDREN

- Of the 421 children exiting out-of-home care in Delaware in 2011, 35.6% were reunited with their parents or other family members.¹⁵
- In 2011, 95 children were legally adopted through the

Children Exiting Foster Care, 2011
by reason



public child welfare agency in Delaware, a 41.8% increase from 67 in 2010.¹⁶

- Of the 845 children in out-of-home care in 2011, 238 or 28.2% were waiting to be adopted.¹⁷
- In 2011, approximately 8,380 Delaware grandparents had primary responsibility caring for their grandchildren.¹⁸
- Of the 845 children in out-of-home care in 2011, 108 were living with relatives while in care.¹⁹
- Of all Delaware children in kinship care in 2010, 4.7% were white, 6.3% black, 1.1% Hispanic, 0.0% American Indian/Alaskan Native, 0.0% Asian or Pacific Islander, and 6.3% of more than one race or ethnicity.²⁰

CHILD POVERTY AND INCOME SUPPORT

- The total number of individuals receiving Temporary Assistance for Needy Families (TANF) in Delaware increased from 14,725 in 2010 to 15,696 in 2011, an increase of 6.6%. The number of families receiving TANF in 2011 was 5,522, a 7.1% increase from 2010.²¹
- From 2009-10, for every 100 Delaware families living in poverty, only 35 received TANF benefits.²²
- In 2011, \$79,324,359 was spent in Delaware on TANF assistance, including 32% on basic assistance, 11% on child care, 1% on transportation, and 56% on nonassistance.²³
- In 2011, 12,235,263 was spent on WIC (the Special Supplement Nutrition Program for Women, Infants, and Children) in Delaware, serving 22,553 participants.²⁴
- In 2011, Delaware distributed \$73,803,807 in child support funds, a 1.4% increase from 2010.²⁵
- In 2011 in Delaware, 24,605 low income renter households paid more than half their monthly income in housing costs, 27% of them are families with children.²⁶

CHILD CARE AND HEAD START

- In 2010, Delaware had a monthly average of 6,100 children served by subsidized child care; 6,000 children received subsidized child care in 2009 and 6,000 in 2008.²⁷
- In 2012, to be eligible for subsidized child care in Delaware, a family of three could make no more than \$37,056, which is equivalent to 53% of the state's median income.²⁸
- As of early 2012, Delaware had no state waiting list for child care assistance.²⁹
- In 2011, Head Start served 2,209 Delaware children, a 7.3% increase from 2010.³⁰

HEALTH AND SUBSTANCE ABUSE

- In 2011, 77,000 children younger than 19 were enrolled in Medicaid in Delaware—39% of the total number of enrollees in the state.³¹
- In 2011, Delaware had 15,348 children enrolled in its State Children's Health Insurance Program, a 19.4% increase from 2010, when 12,852 children were enrolled.³²
- In 2011, Delaware had 13,000 uninsured children, representing 6% of its child population.³³
- In 2010, 1,016 babies were born weighing less than 2,500 grams in Delaware.³⁴
- In 2010, 95 infants under age 1 died in Delaware.³⁵
- In 2010, the birth rate for teens 15–17 in Delaware was 16 births per 1,000 girls; for teens 18–19, the rate was 49. This reflects a total rate of 31 births per 1,000 girls ages 15–19.³⁶
- Cumulative through 2011, 4,310 adults and adolescents, as well as 27 children younger than 13, were reported as having AIDS in Delaware.³⁷
- In 2009 and 2010, an estimated 5,000 children ages 12–17 and 60,000 adults age 18 and older were dependent on or

abusing illicit drugs or alcohol in Delaware.³⁸

VULNERABLE YOUTH

- In 2011, 95 children aged out of out-of-home care—exited foster care to emancipation—in Delaware.³⁹
- In 2011, 4,000 Delaware teens ages 16–19 were not enrolled in school and were not working.⁴⁰
- In 2011, 14,000 young adults ages 18–24 were not enrolled in school, were not working, and had no degree beyond high school.⁴¹
- In 2009 and 2010, approximately 3,000 children ages 12–17 in Delaware needed but had not received treatment for illicit drug use in the past year.⁴²
- In 2009 and 2010, approximately 3,000 children ages 12–17 needed but had not received treatment for alcohol use in the past year.⁴³
- In 2010, less than 10 Delaware children younger than 20 committed suicide.⁴⁴

JUVENILE JUSTICE AND DELINQUENCY PREVENTION

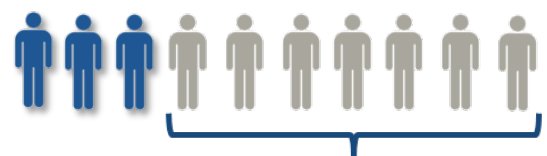
- In 2010, 10 children under age 19 were killed by a firearm in Delaware, an increase from fewer than 10 in 2009.⁴⁵
- In 2011, 4,785 children younger than 18 were arrested in Delaware, a 8.0% decrease from 5,197 arrests in 2010. Of the arrests in 2011, 360 were for violent crimes.⁴⁶
- In 2010, 252 children lived in juvenile correction facilities in Delaware.⁴⁷

CHILD WELFARE WORKFORCE⁴⁸

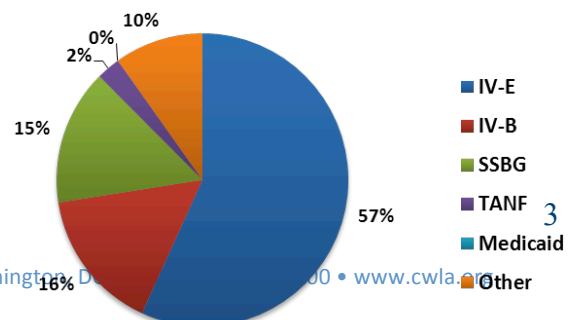
- A 2003 General Accounting Office (GAO) report documented that staff shortages, high caseloads, high worker turnover and low salaries impinge on delivering services to achieve safety, permanence, and well being for children.⁴⁹
- The federal Child and Family Service Reviews have clearly demonstrated that the more time a caseworker spends with a child and family, the better the outcomes for those children and families.⁵⁰
- According to the 2003 GAO report, the average caseload for child welfare/foster care caseworkers is 24–31 children; these high caseloads contribute to high worker turnover and insufficient services being provided to children and families. CWLA recommends that foster care caseworkers have caseloads of 12–15 children.⁵¹

FUNDING CHILD WELFARE SERVICES FOR DELAWARE'S CHILDREN

- Out of 845 children in out-of-home care in Delaware in 2011, only 255, or 30%, received Title IV-E federal foster care assistance.⁵²
- In 2010, Delaware spent \$51,426,154 for child welfare services. Of this amount, \$10,567,749 was from federal funds, \$40,858,405 from state funds, and \$0 from local funds.⁵³
- In 2010, of the \$10,567,749 in federal funds received for child welfare, \$6,002,994 was from Title IV-E Foster Care and Adoption Assistance, \$1,660,104 came from Title IV-B Child Welfare Services and Promoting Safe and Stable Families, \$0 was from Medicaid, \$1,586,869 came from Social Services Block Grant, \$277,968 was from TANF, and \$1,039,814 came from other federal sources.⁵⁴
- Delaware received \$4,456,013 in federal funds for IV-E foster care expenditures in 2011, including \$1,722,234 for maintenance payments, \$2,616,429 for administration and child placement,



Breakdown of Federal Funding, FY 2011



\$211,413 for the statewide automated child welfare information system, and \$75,850 for training.⁵⁵

- Delaware received \$1,466,715 in federal funds for IV-E adoption assistance expenditures in 2011, including \$1,289,921 for assistance payments, and \$176,794 for administration and child placement.⁵⁶

Governor: Jack A. Markell (D)

www.delaware.gov
Tatnall , William Penn Street, 2nd Floor, Dover, DE 19901
Next Election: 2016
Tel: 302-744-4101 Fax: 302-739-2775

	Office	Phone	Fax	Website	Next Election
Senate:					
Christopher Coons (D) <i>Judiciary</i>	127A Russell	224-5042	228-3075	Coons.senate.gov	2014
Thomas R. Carper (D) <i>Finance</i>	513 Hart	224-2441	228-2190	Carper.senate.gov	2018
House:					
John C. Carney (D-At Large)	1406 Longworth	225-4165	225-2291	Johncarney.house.gov	2014

Key Committee Jurisdictions

Senate **H.E.L.P.:** CAPTA; Child Care & Head Start; ESEA

Senate Judiciary: Juvenile Justice

Senate Finance: Child Welfare Reform; Medicaid & Mental Health; SSBG Child Welfare Services & Promoting Safe and Stable Families; TANF

House Education & the Workforce: CAPTA; Child Care & Head Start; ESEA

House Judiciary: Juvenile Justice

House Ways & Means: Child Welfare Reform, SSBG, CWS & PSSF, TANF

House Energy & Commerce: Medicaid & Mental Health

NOTES AND REFERENCES

¹ “At A Glance” statistics are from 2011.

² U.S. Census Bureau (2011). Quick Links to Nation or State level Profiles: *ACS Demographic and Housing Estimates: 2011 American Community Survey 1-year estimates*. Retrieved on January 18, 2013 from <http://www.census.gov/acs/www/>.

³ Ibid.

⁴ U.S. Census Bureau (2011). Quick Links to Nation or State level Profiles: *Selected Economic Characteristics, 2011 American Community Survey 1-year estimates*. Retrieved January 18, 2013 from <http://www.census.gov/acs/www/>.

⁵ Ibid.

⁶ Ibid.

⁷ Ibid.

⁸ Administration on Children, Youth, and Families. (2012). *Child Maltreatment 2011: Reports from the States to the National Child Abuse and Neglect Data System: Table 2-1: Screened-In and Screened-Out Referrals, 2011*. Retrieved January 23, 2013 from <http://www.acf.hhs.gov/sites/default/files/cb/cm11.pdf>.

⁹ Administration on Children, Youth, and Families. (2012). *Child Maltreatment 2012: Report from the States to the National Child Abuse and Neglect Data System: Table 3-3: Child Victims, 2011 & Table 3-8: Maltreatment Types of Victims, 2011*. Retrieved February 13, 2013 from <http://www.acf.hhs.gov/sites/default/files/cb/cm11.pdf>

Note: The percent difference is a CWLA calculation.

¹⁰ Administration on Children, Youth, and Families. (2012). *Child Maltreatment 2011: Reports from the States to the National Child Abuse and Neglect Data System: Table 3-3: Child Victims, 2011*. Retrieved January 25, 2013 from <http://www.acf.hhs.gov/sites/default/files/cb/cm11.pdf>.

Administration on Children, Youth, and Families. (2007). *Child Maltreatment 2007: Reports from the States to the National Child Abuse and Neglect Data System: Table 3-3: Victimization Rates, 2003-2007*. Retrieved February 11, 2013 from <http://archive.acf.hhs.gov/programs/cb/pubs/cm07/cm07.pdf>.

Note: The percentage difference is a CWLA calculation.

¹¹ Administration on Children, Youth, and Families. (2012). *Child Maltreatment 2011: Reports from the States to the National Child Abuse and Neglect Data System: Table 4-2, Child Fatalities, 2007-2011*. Retrieved January 25, 2013 from <http://www.acf.hhs.gov/sites/default/files/cb/cm11.pdf>.

¹² Special tabulation of the Adoption and Foster Care Analysis Reporting System (AFCARS) by National Data Archive for Child Abuse and Neglect (NDACAN) and CWLA.

¹³ Administration on Children, Youth, and Families (n.d.). *Foster Care FY2003-FY2011 Entries, Exits, and Numbers of Children In Care on the Last Day of Each Federal Fiscal year*. Retrieved February 11, 2013 from <http://www.acf.hhs.gov/sites/default/files/cb/entryexit2011.pdf>.

Note: The percent difference is a CWLA calculation.

¹⁴ Special tabulation of AFCARS by NDACAN and CWLA.

¹⁵ Special tabulation of AFCARS by NDACAN and CWLA.

¹⁶ Administration for Children and Families. (2012). *Adoptions of children with public child welfare agency involvement by state*. Retrieved February 11, 2013 from <http://www.acf.hhs.gov/sites/default/files/cb/adoptchild11.pdf>.

Note: The percent difference is a CWLA calculation.

¹⁷ Special tabulation of AFCARS by NDACAN and CWLA.

¹⁸ U.S. Census Bureau. (2011). Quick Links to Nation or State level Profiles: *American Community Survey, Data Profile. Selected Social Characteristics in the United States: 2011*. Retrieved February 11, 2013 from <http://www.census.gov/acs/www/>.

¹⁹ Special tabulation of AFCARS by NDACAN and CWLA.

²⁰ Ibid. Note: Total percentage may not equal 100 because the race/ethnicity of some children was not reported or missing. Percentages are a CWLA calculation.

²¹ U.S. Administration for Children and Families, Office of Family Assistance. (2012). TANF: Total Number of Recipients. Retrieved February 11, 2013 from <http://www.acf.hhs.gov/programs/ofa/resource/2011-recipient-tan>.

U.S. Administration for Children and Families, Office of Family Assistance. (2011). TANF: Total Number of Recipients. Retrieved February 11, 2013 from <http://www.acf.hhs.gov/programs/ofa/resource/2010-recipients-tanf>.

Note: The percent differences are CWLA special tabulations.

²² Center on Budget and Policy Priorities. (2012) *TANF Weakening as a Safety Net for Poor Families: Appendix Table B1: TANF Cases to Families with Children in Poverty Ratios, 1994-95 to 2009-10*. Retrieved January 30, 2013 from <http://www.cbpp.org/cms/index.cfm?fa=view&id=3700>.

²³ Administration for Children and Families. (2012). *Fiscal Year 2011 TANF Financial Data: Table B.1: Summary of Federal TANF and State MOE Expenditures in FY 2011*. Retrieved January 30, 2013 from <http://www.acf.hhs.gov/programs/ofa/resource/tanf-financial-data-fy-2011>.

Administration for Children and Families. (2012). *Fiscal Year 2010 TANF Financial Data: Table B.2: Federal TANF and State MOE Expenditures on Assistance in FY2011*. Retrieved December 21, 2011 from <http://www.acf.hhs.gov/programs/ofa/resource/tanf-financial-data-fy-2011>.

Administration for Children and Families. (2012). *Fiscal Year 2010 TANF Financial Data: Table B.3: Federal TANF and State MOE Expenditures on Non-Assistance in FY 2011*. Retrieved December 21, 2011 from <http://www.acf.hhs.gov/programs/ofa/resource/tanf-financial-data-fy-2011>.

Note: The percents are a CWLA calculation.

²⁴ Food and Nutrition Service. (2013). *Program Data: WIC Program: Food Costs*. Retrieved January 30, 2013 from [http://www.fns.usda.gov/pd/24wicfood\\$.htm](http://www.fns.usda.gov/pd/24wicfood$.htm).

Food and Nutrition Service. (2013). *Program Data: WIC Program: Total Participation*. Retrieved January 30, 2013 from <http://www.fns.usda.gov/pd/26wifypart.htm>.

Note: All program data can be accessed at <http://www.fns.usda.gov/pd/wicmain.htm>.

²⁵ Administration for Children and Families, Office of Child Support Enforcement. (2012). *Preliminary Report FY 2011: State Boxscores for FY 2011*. Retrieved January 30, 2013 from <http://www.acf.hhs.gov/programs/css/resource/fy2011-preliminary-report-state-box-scores>.

- ²⁶ Center on Budget and Policy Priorities. (2011). *National and State Housing Data Factsheet, Spreadsheet with State-by-State Rental Assistance Data: Federal Rental Assistance in the United States and U.S. Territories*. Retrieved January 30, 2013 from <http://www.cbpp.org/cms/index.cfm?fa=view&id=3586>.
Note: Factsheet retrieved from <http://www.cbpp.org/files/2011-state-fact-sheets-public.xls> and data tabulated by CBPP from 2011 American Community Survey data.
- ²⁷ Administration on Children and Families, Office of Child Care. (2011). *2010 CCDF Data Tables (Preliminary Estimates); Table 1: Average Monthly Adjusted Number of Children and Families Served*. Retrieved January 30, 2013 from <http://www.acf.hhs.gov/programs/occ/resource/ccdf-data-10acf800-preliminary>.
- Administration on Children and Families, Office of Child Care (2011). *2009 CCDF Data Tables (Final); Table 1: Average Monthly Adjusted Number of Children and Families Served*. Retrieved January 30, 2013 from <http://www.acf.hhs.gov/programs/occ/resource/ccdf-data-09acf800-final>.
- Administration on Children and Families, Office of Child Care. (2010). *FFY 2008 CCDF Data Tables (Final) Table 1: Average Monthly Adjusted Number of Children and Families Served*. Retrieved January 30, 2013 from <http://www.acf.hhs.gov/programs/occ/resource/ccdf-data-08acf800-final>.
- ²⁸ Schulman, K. & Blank, H. (2012). *State Child Care Assistance Policies 2012: Reduced Support for Families in Challenging Times: Table 1A: Income Eligibility Limits for a Family of Three in 2011 and 2012*. Retrieved February 11, 2013 from http://www.nwlc.org/sites/default/files/pdfs/NWLC2012_StateChildCareAssistanceReport.pdf
- ²⁹ Schulman, K. & Blank, H. (2012). *State Child Care Assistance Policies 2012: Reduced Support for Families in Challenging Times: Table 2: Waiting Lists for Child Care Assistance*. Retrieved February 11, 2013 from http://www.nwlc.org/sites/default/files/pdfs/NWLC2012_StateChildCareAssistanceReport.pdf
- ³⁰ Administration for Children and Families, Office of Head Start. (2012). *Head Start Program Fact Sheet, Fiscal Year 2011*. Retrieved February 13, 2013 from <http://eclkc.ohs.acf.hhs.gov/hslc/mr/factsheets/2011-hs-program-factsheet.html>.
- Administration for Children and Families, Office of Head Start. (2011). *Head Start Program Fact Sheet, Fiscal Year 2010*. Retrieved February 13, 2013 from <http://eclkc.ohs.acf.hhs.gov/hslc/mr/factsheets/fHeadStartProgr.htm>.
- Note: The percent difference is a CWLA calculation.
- ³¹ Henry J. Kaiser Family Foundation . (2012). *Monthly Medicaid Enrollment for Children (in thousands)*. Retrieved February 20, 2013 from <http://www.statehealthfacts.org/comparemaptable.jsp?ind=612&cat=4>.
- Henry J. Kaiser Family Foundation. (2012.) *Monthly Medicaid Enrollment (in thousands)*. Retrieved February 20, 2013 from <http://www.statehealthfacts.org/comparemaptable.jsp?ind=774&cat=4>
- ³² Center for Medicare and Medicaid Services. (2012.). *FY 2011 Number of Children Ever Enrolled Year-CHIP by Program Type* . Retrieved March 7, 2013 from http://www.medicaid.gov/Medicaid-CHIP-Program-Information/By-Topics/Childrens-Health-Insurance-Program-CHIP/Downloads/FY_2011_State_Total_CHIP-Table_-final_02102012.pdf
- ³³ U.S. Census Bureau. (2012). *Table HIB-5. Health Insurance Coverage Status and Type of Coverage by State—Children Under 18: 1999 to 2011*. Retrieved March 1, 2013 from <http://www.census.gov/hhes/www/hlthins/data/historical/files/hihist5B.xls>
- ³⁴ Annie E. Casey Foundation. (n.d.). *Kids Count. Data Across States: Rankings/Maps/Trends by Topic: Low-birth weight babies (Number)- 2010*. Retrieved March 1, 2013 from <http://datacenter.kidscount.org/data/acrossstates/Rankings.aspx?loct=2&by=a&order=a&ind=5425&dtm=11984&tf=133>.
- ³⁵ Murphy, S., Xu, J., & Kochanek, K. . (2012). *National Vital Statistics Report: Deaths: Preliminary Data for 2010-* Table I. Total count of records and percent completeness of preliminary files of infant deaths and deaths to those aged 1 year and over: United States, each state and territory, preliminary 2010. Retrieved March 7, 2013 from http://www.cdc.gov/nchs/data/nvsr/nvsr60/nvsr60_04.pdf.
- ³⁶ Martin, J., Hamilton, B., Ventura, S., Osterman, M., Wilson, E., Mathew, T.J.. (2012). *National Vital Statistics Report: Births: Final Data for 2010- Table 12. Birth rate, by age of mother : United States, each state and territory, 2010.-*. Retrieved March 7, 2013 from http://www.cdc.gov/nchs/data/nvsr/nvsr61/nvsr61_01.pdf.
- ³⁷ Centers for Disease Control and Prevention. (2011). *HIV/AIDS Surveillance Report, 2011. Vol. 23: Table 20: Stage 3 (AIDS), by area of residence, 2011 and cumulative—United States and 6 dependent areas*. Retrieved March 1, 2013 from http://www.cdc.gov/hiv/surveillance/resources/reports/2011report/pdf/2011_HIV_Surveillance_Report_vol_23.pdf#Page=69
- ³⁸ Substance Abuse and Mental Health Services Administration, Office of Applied Studies. (n.d.). *State Estimates of Substance Use & Mental Health from the 2009-2010 National Surveys on Drug Use and Health: Table 20.-Dependence or Abuse of Illicit Drugs or Alcohol in the Past Year, by Age Group and State: Estimated Numbers (in Thousands), Annual Averages Based on 2009 and 2010 NSDUHs*. Retrieved March 1, 2013 from <http://www.samhsa.gov/data/NSDUH/2k10State/NSDUHsae2010/NSDUHsaeCountTabs2010.htm>.
- ³⁹ Special tabulation of AFCARS by NDACAN and CWLA.
- ⁴⁰ Annie E. Casey Foundation. (n.d.). *Kids Count: Data Across States: Rankings/Maps/Trends by Topic: Teens ages 16 to 19 not attending school and not working (Number) - 2011*. Retrieved February 14, 2013 from <http://datacenter.kidscount.org/data/acrossstates/Rankings.aspx?loct=2&by=a&order=a&ind=5062&dtm=11482&tf=867>.
- ⁴¹ Annie E. Casey Foundation (n.d.). *Kids Count. Data Across States: Rankings/Maps/Trends by Topic: Persons Age 18–24 not attending school, not working, and no degree beyond High School (Number) - 2011*. Retrieved February 14, 2013 from <http://datacenter.kidscount.org/data/acrossstates/Rankings.aspx?loct=2&by=a&order=a&ind=5063&dtm=11484&tf=867>.
- ⁴² Substance Abuse and Mental Health Services Administration, Office of Applied Studies. (n.d.). *State Estimates of Substance Use & Mental Health from the 2009-2010 National Surveys on Drug Use and Health: Table 21-Needing But Not Receiving Treatment for Illicit Drug Use in the Past Year, by Age Group and State: Estimated Numbers (in Thousands), Annual Averages Based on 2009 and 2010 NSDUHs*. Retrieved February 20, 2013 from <http://www.samhsa.gov/data/NSDUH/2k10State/NSDUHsae2010/NSDUHsaeCountTabs2010.htm>.
- ⁴³ Substance Abuse and Mental Health Services Administration, Office of Applied Studies. (n.d.). *State Estimates of Substance Use & Mental Health from the 2009-2010 National Surveys on Drug Use and Health: Table 22 - Needing But Not Receiving Treatment for Alcohol Use in the Past Year, by Age Group and State: Estimated Numbers (in Thousands), Annual Averages Based on 2009 and 2010 NSDUHs*. Retrieved February 20, 2013 from <http://www.samhsa.gov/data/NSDUH/2k10State/NSDUHsae2010/NSDUHsaeCountTabs2010.htm>.
- ⁴⁴ National Center for Injury Prevention and Control: Data & Statistics (WISQARS). (n.d.). *Suicide Injury Deaths and Rates per 100,000: All Races, Both Sexes, Ages 0 to 19*. Retrieved March 13, 2013, from http://www.cdc.gov/injury/wisqars/fatal_injury_reports.html.
- ⁴⁵ National Center for Injury Prevention and Control: Data & Statistics (WISQARS). (n.d.). *Firearm Deaths and Rates per 100,000: All Races, Both Sexes, Ages 0 to 19*. Retrieved March 18, 2013 from http://www.cdc.gov/injury/wisqars/fatal_injury_reports.html.
- Note: The percent difference is a CWLA calculation.

⁴⁶ Federal Bureau of Investigation. (2012). *Crime in the United States 2011: Table 69: Arrests by State, 2011*. Retrieved February 27, 2013 from http://www.fbi.gov/about-us/cjis/ucr/crime-in-the-u.s/2011/crime-in-the-u.s.-2011/tables/table_69_arrest_by_state_2011.xls.

Federal Bureau of Investigation. (2011). *Crime in the United States 2010: Arrests by States, 2010*. Retrieved February 27, 2013 from . <http://www.fbi.gov/about-us/cjis/ucr/crime-in-the-u.s/2010/crime-in-the-u.s.-2010/tables/10tbl69.xls>.

Note: The percent difference is a CWLA calculation.

⁴⁷ Sickmund, M., Sladky, T.J., Kang, W., & Puzanchera, C. (2011). *Easy Access to the Census of Juveniles in Residential Placement*. Retrieved February 14, 2013 from www.ojjdp.gov/ojstatbb/ezacjrp.

⁴⁸ Note: The dearth in current state-by-state workforce data makes clear the need for critical data on compensation, working conditions including safety issues, academic degrees held, education and training received, and factors contributing to turnover. To address this, CWLA is calling for Congress to authorize the National Academy of Sciences (NAS) to conduct an updated study on the child welfare workforce. It would make recommendations regarding caseloads and workloads, education levels, and training requirements. In addition, the study would examine data reporting and collection and make recommendations on how states might improve these efforts.

⁴⁹ U.S. General Accounting Office. (2003). *Child Welfare: HHS Could Play a Greater Role in Helping Child Welfare Agencies Recruit and Retain Staff*. Retrieved January 19, 2012 from www.gao.gov/new.items/d03357.pdf.

⁵⁰ Ibid.

⁵¹ Ibid.

⁵² Administration on Children, Youth, and Families (2012). *Foster Care FY2003–FY2011 Entries, Exits, and Numbers of Children In Care on the Last Day of Each Federal Fiscal year*. Retrieved February 28, 2013 from <http://www.acf.hhs.gov/sites/default/files/cb/entrEXIT2011.pdf>.

Note: The penetration rate is a CWLA calculation of special Children’s Bureau data on state IV-E Foster Care expenditures.

⁵³ DeVooght, K., Fletcher, M., Vaughn, B., & Cooper, H. (2012). *Federal, State, and Local Spending to Address Child Abuse and Neglect in SFYs 2008 and 2010*. Washington, DC: Child Trends. Retrieved March 18, 2013 from http://www.childtrends.org/Files/Child_Trends-2012_06_20_FR_CaseyCWFinancing.pdf.

⁵⁴ Ibid.

⁵⁵ Special Children’s Bureau data on state IV-E Foster Care and Adoption Assistance.

Note: The component funding streams may not equal the total, depending on additional child support, pre-placement, and demonstration funds for this state.

⁵⁶ Ibid.

Note: The component funding streams may not equal the total, depending on additional partner training funds.